

Cluster pair correlation function of simple fluids: energetic connectivity criteria

Luis A. Pugnali^{1,*} Guillermo J. Zarragoicoechea^{1,2} and Fernando Vericat^{1,3}

¹*Instituto de Física de Líquidos y Sistemas Biológicos (IFLYSIB),
UNLP-CONICET, cc. 565, (1900) La Plata, Argentina*

²*Comisión de Investigaciones Científicas y Tecnológicas
de la Prov. de Buenos Aires (CICPBA), Argentina*

³*Grupo de Aplicaciones Matemáticas y Estadísticas de la
Facultad de Ingeniería (GAMEFI) - UNLP, La Plata, Argentina*

Abstract

We consider the clustering of Lennard-Jones particles by using an energetic connectivity criterion proposed long ago by T.L. Hill [J. Chem. Phys. **32**, 617 (1955)] for the bond between pairs of particles. The criterion establishes that two particles are bonded (directly connected) if their relative kinetic energy is less than minus their relative potential energy. Thus, in general, it depends on the direction as well as on the magnitude of the velocities and positions of the particles. An integral equation for the pair connectedness function, proposed by two of the authors [Phys Rev. E **61**, R6067 (2000)], is solved for this criterion and the results are compared with those obtained from molecular dynamics simulations and from a connectedness Percus-Yevick like integral equation for a velocity-averaged version of Hill's energetic criterion.

I. INTRODUCTION

The concepts of clustering and percolation have been widely used in order to explain several phenomena in very diverse areas including Physics, Chemistry, Biology, Geology, Sociology and Economics. In particular, with reference to chemical–physics, phenomena such as nucleation,¹ hydrogen bonding,² insulator–conductor, sol–gel and glass transitions^{3,4,5,6,7,8,9} as well as bridging in granular materials¹⁰ are currently studied from this point of view. In all these cases, the system under study can be thought of as a collection of individuals (atoms, molecules, grains, etc.) that, with generality, we call particles. Most of the efforts have been based on lattice representations of the systems. The relative simplicity of lattice models allows for a wide variety of treatments, which extend from almost heuristic¹¹ to quite rigorous.¹² Whatever the treatment is, the concept of connectivity between the particles plays an important role.

Sometimes, however, a continuous description—where particles can occupy any point in a continuum phase space—is needed to reach a more realistic picture of the phenomena under consideration. For this context, the concept of connectivity has been generalized and adapted to describe clustering and percolation in continuum systems. The main ideas have been established in the pioneering works of Hill¹³ and Coniglio *et al.*¹⁴ Hill considers a partition of the whole system into subsystems of particles (the clusters) that satisfy some linking properties. The concept of cluster is thus directly related to the idea of bonded pairs. A bonded pair is a set of two particles that are linked by some direct mechanism. A cluster is then defined as a set of particles such that any pair of particles in the set is connected through a path of bonded pairs. We call these clusters “chemical clusters” to distinguish them from the non-pair-bonded clusters we have introduced in a previous work¹⁵—note, however, that this does not mean that clusters are necessarily formed through a true chemical bonding. A system is said to be in a percolated configuration if it contains a cluster that spans the system volume.

From Hill’s theory, we see that a connectivity criterion is needed in order to decide whether two particles are bonded or not. This connectivity criterion has to be defined in accordance with the phenomenon under study.^{4,16,17} In the search for stable atomic clusters, which mark the onset of a phase transition in a monatomic gas, Hill proposed a simple energetic criterion (HE): two particles are bonded if their relative kinetic energy is less than the negative of their relative potential energy.¹³ In principle, this criterion takes into account the relative positions and velocities of the relevant pair of particles. For molecular fluids, instead of just their distance, the potential energy could in general depend on the direction and magnitude of the vector position of each of the two involved particles and their relative orientations.

From a theoretical point of view, a criterion that involves the velocity of the particles prevents the straightforward integration of the momenta in the partition function, which is the great advantage of classical statistical mechanics. To avoid this obstacle, Hill¹³ himself has proposed a velocity-averaged (VA) version of his criterion giving effective potentials between bound and unbound particles.

The VA and the complete HE criteria have been used in computer simulations as well as in integral equations studies. For the VA criterion only the particle positions come into account, so it is suitable to both, Monte Carlo (MC) and molecular dynamics (MD) calculations. With respect to the integral equations approach, Coniglio *et al.*¹⁴ have obtained a connectedness Ornstein–Zernike (OZ) relationship for the pair connectedness function

$g^\dagger(\mathbf{r}_1, \mathbf{r}_2)$ (see also a review from Stell).¹⁸ This function is proportional to the joint probability density of finding two particles belonging to the same cluster and at positions \mathbf{r}_1 and \mathbf{r}_2 , respectively. Therefore, by integrating $g^\dagger(\mathbf{r}_1, \mathbf{r}_2)$, the mean cluster size S and the percolation density ρ_p —*i.e.* the value of ρ for which $S(\rho)$ diverges—can be obtained. Since Coniglio’s theory deals only with the positions of the particles, the HE criterion cannot be implemented. Instead, the VA criterion was used by Coniglio *et al.*¹⁴ to analytically calculate the percolation loci, for a potential made up of a hard core plus an attractive interaction, in a crude mean-field approximation.

It is worth mentioning that most of the theoretical studies^{19,20,21,22} on connectivity and percolation in continuum systems based on Coniglio’s type equations were focused in the rather simple Stillinger’s connectivity criterion.²³ This criterion states that two particles are bonded if they are separated by a distance shorter than a given connectivity distance d . In this case, d is an *ad hoc* parameter, which must be chosen on physical grounds. Although this criterion might be sensible in the study of certain insulator–conductor transitions, it is unrealistic regarding clustering in saturated vapors.

A general theory which is appropriate for bonding criteria involving both, the momenta and positions of a pair of particles, has been developed by two of us.²⁴ The main object in our theory is the pair connectedness function $g^\dagger(\mathbf{r}_1, \mathbf{r}_2, \mathbf{p}_1, \mathbf{p}_2)$ which is proportional to the joint probability density of finding two particles at positions \mathbf{r}_1 and \mathbf{r}_2 with momenta \mathbf{p}_1 and \mathbf{p}_2 , respectively, and belonging to the same cluster. This function verifies also an OZ like relationship. In a previous paper²⁵ (thereafter denoted as I) we applied our general theory to study the complete HE criterion for the same model fluid considered by Coniglio *et al.*¹⁴ under the VA criterion. We also used the same simple closure relation proposed by Coniglio *et al.* More recently, we have reported²⁶ the solution of our generalized connectedness OZ type relation for a Lennard–Jones fluid closed with a connectedness Percus–Yevick (PY) condition. We implemented a connectivity criterion which generalizes Stillinger’s criterion in that a life time τ for the bonds is required.¹⁵

In Ref. I we have also performed MD simulations of the Lennard–Jones fluid and have used both criteria (HE and VA) to define the clusters. We concluded that the VA criterion strongly overestimates percolation densities. We will partially revise these results here and will discuss some subtleties related to the identification of percolating clusters. Notice that MD simulations are convenient when the HE criterion is used to identify clusters since MC algorithms do not provide *per se* the velocities of the particles.²⁷ It should be mentioned that the HE criterion has been considered in MD studies of small clusters and the critical percolation behavior of Lennard–Jones fluids by several authors.^{28,29,30} It has been suggested that the percolation line—the line that separates the temperature–density phase diagram into percolated and non-percolated states—might be experimentally observable.^{30,31} Moreover, cluster analysis based on this criterion seems to be useful in locating the gas–liquid coexistence curve.³⁰

The main purpose of this work is to apply the generalized connectedness OZ type relationship closed with a connectedness PY condition for the Lennard–Jones fluid in order to obtain the pair connectedness function $g_{\text{HE}}^\dagger(\mathbf{r}_1, \mathbf{r}_2, \mathbf{p}_1, \mathbf{p}_2)$ for HE clusters and thus the related cluster pair correlation function:

$$g_{\text{HE}}^\dagger(\mathbf{r}_1, \mathbf{r}_2) = \int \rho(\mathbf{r}_1, \mathbf{p}_1) \rho(\mathbf{r}_2, \mathbf{p}_2) g_{\text{HE}}^\dagger(\mathbf{r}_1, \mathbf{r}_2, \mathbf{p}_1, \mathbf{p}_2) d\mathbf{p}_1 d\mathbf{p}_2, \quad (1)$$

where $\rho(\mathbf{r}_1, \mathbf{p}_1)$ is N times the probability density of finding a particle at the phase space

configuration $(\mathbf{r}_1, \mathbf{p}_1)$.

We compare $g_{\text{HE}}^\dagger(\mathbf{r}_1, \mathbf{r}_2)$ so obtained with the function $g_{\text{VA}}^\dagger(\mathbf{r}_1, \mathbf{r}_2)$ for the VA criterion calculated using the integral equation that results when the OZ type relationship of Coniglio *et al.*¹⁴ is closed with a PY like conditions. Both functions— $g_{\text{HE}}^\dagger(\mathbf{r}_1, \mathbf{r}_2)$ and $g_{\text{VA}}^\dagger(\mathbf{r}_1, \mathbf{r}_2)$ —are compared with the corresponding curves given by MD simulations.

The paper is organized as follow. In Sec. II we present the model system and the two connectivity criteria, i.e. HE and VA, we will work on. Also we use this section to discuss some aspects about the MD simulations. The continuum clustering theories suitable for each criteria will be sketched in Sec. III. There, we briefly describe the integral equation for $g_{\text{HE}}^\dagger(\mathbf{r}_1, \mathbf{r}_2, \mathbf{p}_1, \mathbf{p}_2)$ and its solution following Lado's orthogonal polynomials method.^{26,32} Finally in Sec. IV we compare the theoretical results with those obtained from simulations. We then summarize and give the conclusions.

II. MODEL SYSTEM AND ENERGETIC CRITERIA

We consider a system of N particles whose configurations are given by their positions and momenta $(\mathbf{r}_i, \mathbf{p}_i)$ ($i = 1, \dots, N$). The canonical (NVT) ensemble will be used throughout. We assume that particles interact via the Lennard–Jones pair potential

$$v(r_{ij}) = 4\varepsilon \left[\left(\frac{\sigma}{r_{ij}} \right)^{12} - \left(\frac{\sigma}{r_{ij}} \right)^6 \right], \quad (2)$$

where $r_{ij} = |\mathbf{r}_{ij}|$ with $\mathbf{r}_{ij} = \mathbf{r}_j - \mathbf{r}_i$.

The clustering criteria are expressed in terms of the bond conditional probability density $P(\mathbf{r}_{i,j}, \mathbf{p}_{i,j})$, say the probability density that two particles i and j are bonded under the condition that their positions and momenta are $(\mathbf{r}_i, \mathbf{p}_i)$ and $(\mathbf{r}_j, \mathbf{p}_j)$, respectively.

A. HE criterion

The original Hill's criterion (HE) identifies clusters by defining:¹³

$$P_{\text{HE}}(\mathbf{r}_{i,j}, \mathbf{p}_{i,j}) = \begin{cases} 1 & \mathbf{p}_{i,j}^2/4m < -v(\mathbf{r}_i, \mathbf{r}_j) \text{ and } r_{i,j} \leq d \\ 0 & \mathbf{p}_{i,j}^2/4m \geq -v(\mathbf{r}_i, \mathbf{r}_j) \text{ or } r_{i,j} > d \end{cases} \quad (3)$$

with $\mathbf{p}_{i,j}$ the relative momentum: $\mathbf{p}_{i,j} = \mathbf{p}_j - \mathbf{p}_i$. A maximum connectivity distance d has been added to the criterion in order to avoid unrealistic bonding.

B. VA criterion

By integrating the relative momenta weighted by the Maxwell distribution in the region where the relative kinetic energy is lesser than minus the pair potential, the momenta are eliminated and the VA bond conditional probability density is obtained:^{13,14}

$$P_{\text{VA}}(r_{i,j}) = \begin{cases} 0 & v(r_{i,j}) > 0 \text{ or } r_{i,j} > d \\ \gamma[3/2, -v(r_{i,j})/k_B T] / \Gamma[3/2] & v(r_{i,j}) \leq 0 \text{ and } r_{i,j} \leq d, \end{cases} \quad (4)$$

where $\Gamma[a]$ is the gamma function and $\gamma[a, x]$ is the incomplete gamma function.

C. Molecular dynamics calculations

We consider a system of Lennard–Jones particles in a cubic box with periodic boundary conditions in the NVT ensemble and use a leap-frog algorithm with velocity correction.³³ The time step is chosen as $\Delta t^* = \Delta t \sigma^{-1} \sqrt{k_B T / (\epsilon m)} = 0.01$. Quantities are averaged over 10^3 configurations chosen every 100 Δt after equilibration. A cut off distance equal to 2.5σ was used in the pair potential.

In the VA case, for each pair of particles that satisfies $v(r_{i,j}) \leq 0$ and $r_{i,j} \leq d$, we generate a random number z , between 0 and 1. If $z < \gamma[3/2, -v(r_{i,j})/k_B T] / \Gamma[3/2]$ we consider that the particles form a bonded-pair, otherwise we do not. Note that this criterion can also be used in MC simulations because it does not require information on the particle velocities. To identify the clusters from the list of bonded-pairs we use the Stoddard’s algorithm.^{33,34}

A system is said to be in a percolated state if a cluster that spans the replicas is present 50 percent of the time.³⁵ It is known that this criterion yields results that are marginally affected by finite size effects.³⁶ Then, a percolation transition curve, which separates the percolated from the non-percolated states of the system, can be drawn above the coexistence curve in the $T - \rho$ phase diagram.

In Fig. 1, the percolation loci for HE and VA connectivity criteria are presented for $d = 3\sigma$. These simulations were performed with $N = 1372$ particles. The gas–liquid coexistence curve obtained by Panagiotopoulos³⁷ and the MC liquid–solid coexistence curve of Hansen and Verlet³⁸ are also shown. The MD results for the HE criterion are similar to those obtained by Campi *et al.*³⁰ These authors consider that the system is on the percolation line if the second moment of the cluster size distribution that excludes the largest cluster $n'(s)$ reaches its maximum. In Fig. 2 we show the dependence of the calculated percolation density with system size and connectivity distance d . Extrapolation to infinite systems can be obtained by fitting a straight-line to a plot of ρ_p versus $L^{-1/\nu}$.³⁵ We have used the universal value of $\nu = 0.88 \pm 0.02$ reported by Gaunt and Sykes³⁹ for three-dimensional systems. The error due to finite size effects in the calculated value of ρ_p for the 1372-particle system is of 1.0%. This correction is smaller than the size of our symbols in Fig. 1. Also from Fig. 2, we see that the effect of the connectivity distance d on ρ_p is negligible for $d > 2.5$.

As we can see from Fig. 1, the VA criterion is a very good approximation to the full HE criterion as far as the percolation loci is concerned. In Ref. I, we reported a VA percolation line that was located at much larger densities, and concluded that the approximation was rather poor. The revised results reported here show that this is not the case. The source of the error in Ref. I comes from the way percolating clusters are detected according to the Seaton–Glandt prescription.³⁵ All clusters in a given configuration are first identified by the Stoddard’s algorithm, then each cluster is analyzed separately to determine if its replicas are connected with one another. Since the VA criterion implies the use of random numbers to decide whether two particles are connected, the second step where each separated cluster is analyzed for percolation needs to reuse the same random numbers generated when it was first identified. This subtlety was overseen in Ref. I, which led to the incorrect identification of actual percolating clusters as disconnected replicas.

III. CLUSTER PAIR CORRELATION FUNCTIONS

In the remainder of the paper we restrict our attention to the cluster pair correlations for the HE and VA energetic criteria. We calculate them by using the above mentioned integral

equations and MD simulations. Thus, this section will be devoted to pose the integral equations for the cluster correlation functions $g_{\text{HE}}^\dagger(\mathbf{r}_1, \mathbf{r}_2)$ and $g_{\text{VA}}^\dagger(\mathbf{r}_1, \mathbf{r}_2)$ and briefly discuss their solutions.

A. VA criterion

In order to study clustering in a system composed of N classical particles interacting via a pair potential $v(\mathbf{r}_1, \mathbf{r}_2)$, Hill separated the Boltzmann factor $e(\mathbf{r}_1, \mathbf{r}_2) = \exp[-\beta v(\mathbf{r}_1, \mathbf{r}_2)]$, into bonded (\dagger) and unbounded ($*$) terms:¹³ $e(\mathbf{r}_1, \mathbf{r}_2) = e^\dagger(\mathbf{r}_1, \mathbf{r}_2) + e^*(\mathbf{r}_1, \mathbf{r}_2)$. As usual $\beta = 1/k_B T$, being k_B the Boltzmann constant. Since $e^\dagger(\mathbf{r}_1, \mathbf{r}_2)$ represents the basic probability density of finding two particles bonded and at positions \mathbf{r}_1 and \mathbf{r}_2 , this separation yields a diagrammatic expansion for the partition function in terms of “chemical” clusters. We express Hill’s separation as follows

$$e^\dagger(\mathbf{r}_1, \mathbf{r}_2) = P(\mathbf{r}_1, \mathbf{r}_2) \exp[-\beta v(\mathbf{r}_1, \mathbf{r}_2)] \quad (5)$$

$$e^*(\mathbf{r}_1, \mathbf{r}_2) = [1 - P(\mathbf{r}_1, \mathbf{r}_2)] \exp[-\beta v(\mathbf{r}_1, \mathbf{r}_2)] \quad (6)$$

where $P(\mathbf{r}_1, \mathbf{r}_2) = P_{\text{VA}}(r_{1,2})$ is given by Eq. (4) in the case of the VA energetic criterion.

Fugacity and density expansions have been found, within Hill’s formalism, by Coniglio and co-workers⁵ for the pair connectedness function $g^\dagger(\mathbf{r}_1, \mathbf{r}_2) \equiv g_{\text{VA}}^\dagger(\mathbf{r}_1, \mathbf{r}_2)$. As it was already mentioned, this function is proportional to the joint probability density of finding two particles belonging to the same cluster and at positions \mathbf{r}_1 and \mathbf{r}_2 , respectively. Moreover, by collecting nodal and non-nodal diagrams in these expansions an OZ-type relationship is obtained

$$g^\dagger(\mathbf{r}_1, \mathbf{r}_2) = c^\dagger(\mathbf{r}_1, \mathbf{r}_2) + \rho \int c^\dagger(\mathbf{r}_1, \mathbf{r}_3) g^\dagger(\mathbf{r}_3, \mathbf{r}_2) d\mathbf{r}_3. \quad (7)$$

The function $c^\dagger(\mathbf{r}_1, \mathbf{r}_2)$ is the direct pair connectedness function. By posing a closure relation, an integral equation for $g^\dagger(\mathbf{r}_1, \mathbf{r}_2)$ is obtained. Here, we use the more reliable closure available, *i.e.* the PY-like relation⁵

$$g^\dagger(r_{1,2}) = [f^*(r_{1,2}) + 1][g^\dagger(r_{1,2}) - c^\dagger(r_{1,2})] + \exp[\beta v(r_{1,2})]g(r_{1,2})f^\dagger(r_{1,2}). \quad (8)$$

In Eq. (8), $f^*(r_{1,2}) = e^*(r_{1,2}) - 1 = \exp[-\beta v(r_{1,2})][1 - P_{\text{VA}}(r_{1,2})] - 1$ is the unbound Mayer function and $g(r_{1,2})$ is the thermal pair distribution function (PDF).

In order to solve the integral equation given by Eqs. (7) and (8), for the Lennard–Jones potential we have implemented Labik’s numerical algorithm.⁴⁰

B. HE criterion

1. The integral equation

We summarize here the basic theory that we have developed²⁴ to describe the clustering and percolation for clusters whose bond definition depends on the positions and momenta of the two particles under consideration.

For a system of N classical particles that interact through a pair potential $v(\mathbf{r}_i, \mathbf{r}_j)$, we define a density correlation function $\rho(\mathbf{r}_1, \mathbf{r}_2, \mathbf{p}_1, \mathbf{p}_2)$ that is $N(N-1)$ times the probability density of finding two particles at the phase space configurations $(\mathbf{r}_1, \mathbf{p}_1)$ and $(\mathbf{r}_2, \mathbf{p}_2)$ respectively:

$$\rho(\mathbf{r}_1, \mathbf{r}_2, \mathbf{p}_1, \mathbf{p}_2) = \frac{N(N-1)}{h^{3N} N! Q(N, V, T)} \times \int \prod_{i=1}^N \exp[-\beta \frac{\mathbf{p}_i^2}{2m}] \prod_{i=1}^N \prod_{j>i}^N \exp[-\beta v(\mathbf{r}_i, \mathbf{r}_j)] d\mathbf{r}^{N-2} d\mathbf{p}^{N-2}. \quad (9)$$

Here h is Planck's constant and $Q(N, V, T)$ the canonical partition function of the system. Then, in the same spirit of Hill and Coniglio *et al.*,^{5,13} we separate $\exp[-\beta v(\mathbf{r}_i, \mathbf{r}_j)]$ into connecting and blocking parts,

$$\exp[-\beta v(\mathbf{r}_i, \mathbf{r}_j)] = f^\dagger(\mathbf{r}_i, \mathbf{r}_j, \mathbf{p}_i, \mathbf{p}_j) + f^*(\mathbf{r}_i, \mathbf{r}_j, \mathbf{p}_i, \mathbf{p}_j) + 1. \quad (10)$$

Here $f^\dagger(\mathbf{r}_i, \mathbf{r}_j, \mathbf{p}_i, \mathbf{p}_j)$ represents the basic probability density that two particles in configuration $(\mathbf{r}_i, \mathbf{r}_j, \mathbf{p}_i, \mathbf{p}_j)$ are bonded. We will sometimes use the shorthand notation $f^\gamma(\mathbf{r}_i, \mathbf{r}_j, \mathbf{p}_i, \mathbf{p}_j) \equiv f_{i,j}^\gamma$, where γ can be either \dagger or $*$. Substitution of Eq. (10) in Eq. (9) yields

$$\rho(\mathbf{r}_1, \mathbf{r}_2, \mathbf{p}_1, \mathbf{p}_2) = \frac{N(N-1)}{h^{3N} N! Q(N, V, T)} \exp[-\beta v(\mathbf{r}_1, \mathbf{r}_2)] \times \int \prod_{i=1}^N \exp[-\beta \frac{\mathbf{p}_i^2}{2m}] \sum \{ \prod f_{i,j}^\dagger f_{k,l}^* \} d\mathbf{r}^{N-2} d\mathbf{p}^{N-2}, \quad (11)$$

where the sum is carried out over all possible arrangements of products of functions $f_{i,j}^\dagger$ and $f_{k,l}^*$.

We note that the functions $f_{i,j}^\dagger$ and $f_{i,j}^*$ can depend on the momenta as well as on the positions of the two particles, but the sum of $f_{i,j}^\dagger$ and $f_{i,j}^*$ must be momentum independent in order to conform to Eq. (10). Except for this last condition, the functions $f_{i,j}^\dagger$ and $f_{i,j}^*$ are otherwise arbitrary for thermodynamic purposes. Of course, we choose them in such a way that the desired definition of bonded particles for HE clusters is achieved, *i.e.*,

$$f_{i,j}^\dagger = \exp[-\beta v(r_{i,j})] P(\mathbf{r}_{i,j}, \mathbf{p}_{i,j}) \quad (12)$$

$$f_{i,j}^* = \exp[-\beta v(r_{i,j})] [1 - P(\mathbf{r}_{i,j}, \mathbf{p}_{i,j})] - 1 \quad (13)$$

where $P(\mathbf{r}_{i,j}, \mathbf{p}_{i,j}) = P_{\text{HE}}(\mathbf{r}_{i,j}, \mathbf{p}_{i,j})$ is given in Eq. (3).

Each term in the integrand of Eq. (11) can be represented as a diagram consisting of two white e_1 and e_2 points, $N-2$ black e_i points and some $f_{i,j}^\dagger$ and $f_{i,j}^*$ connections except between the white points. Here we take $e_i \equiv \exp[-\beta \frac{\mathbf{p}_i^2}{2m}]$. White points are not integrated over whereas black points are integrated over both their positions and momenta. All the machinery normally used to handle standard diagrams in classical liquid theory⁴¹ can now be extended to treat these new type of diagrams. By following Coniglio's recipe to separate

connecting and blocking parts in the PDF, $g(\mathbf{r}_1, \mathbf{r}_2) = g^\dagger(\mathbf{r}_1, \mathbf{r}_2, \mathbf{p}_1, \mathbf{p}_2) + g^*(\mathbf{r}_1, \mathbf{r}_2, \mathbf{p}_1, \mathbf{p}_2)$, we obtain an OZ-like integral equation for $g^\dagger(\mathbf{r}_1, \mathbf{r}_2, \mathbf{p}_1, \mathbf{p}_2)$,

$$g^\dagger(\mathbf{r}_1, \mathbf{r}_2, \mathbf{p}_1, \mathbf{p}_2) = c^\dagger(\mathbf{r}_1, \mathbf{r}_2, \mathbf{p}_1, \mathbf{p}_2) + \int \rho(\mathbf{r}_3, \mathbf{p}_3) c^\dagger(\mathbf{r}_1, \mathbf{r}_3, \mathbf{p}_1, \mathbf{p}_3) g^\dagger(\mathbf{r}_3, \mathbf{r}_2, \mathbf{p}_3, \mathbf{p}_2) d\mathbf{r}_3 d\mathbf{p}_3. \quad (14)$$

Here $\rho(\mathbf{r}_1, \mathbf{p}_1)\rho(\mathbf{r}_2, \mathbf{p}_2)g^\dagger(\mathbf{r}_1, \mathbf{r}_2, \mathbf{p}_1, \mathbf{p}_2)$ is $N(N-1)$ times the joint probability density of finding two particles at positions \mathbf{r}_1 and \mathbf{r}_2 with momenta \mathbf{p}_1 and \mathbf{p}_2 , respectively, and belonging to the same cluster, where the bonding criterion is given by Eqs. (12), (13) and (3), while

$$\rho(\mathbf{r}_1, \mathbf{p}_1) = \frac{1}{N-1} \int \rho(\mathbf{r}_1, \mathbf{r}_2, \mathbf{p}_1, \mathbf{p}_2) d\mathbf{r}_2 d\mathbf{p}_2. \quad (15)$$

The function $c^\dagger(\mathbf{r}_1, \mathbf{r}_2, \mathbf{p}_1, \mathbf{p}_2)$ denotes the sum of all the non-nodal diagrams in the diagrammatic expansion of $g^\dagger(\mathbf{r}_1, \mathbf{r}_2, \mathbf{p}_1, \mathbf{p}_2)$. We recall here that a nodal diagram contains at least one black point through which all paths between the two white points pass. For a homogeneous system, we have

$$g^\dagger(\mathbf{r}_{12}, \mathbf{p}_1, \mathbf{p}_2) = c^\dagger(\mathbf{r}_{12}, \mathbf{p}_1, \mathbf{p}_2) + \frac{\rho}{(2\pi mk_B T)^{3/2}} \times \int \exp[-\beta \frac{p_3^2}{2m}] c^\dagger(\mathbf{r}_{13}, \mathbf{p}_1, \mathbf{p}_3) g^\dagger(\mathbf{r}_{32}, \mathbf{p}_3, \mathbf{p}_2) d\mathbf{r}_3 d\mathbf{p}_3. \quad (16)$$

To obtain a closed integral equation with Eq. (14) or Eq. (16), we need a closure relation between $g^\dagger(\mathbf{r}_1, \mathbf{r}_2, \mathbf{p}_1, \mathbf{p}_2)$ and $c^\dagger(\mathbf{r}_1, \mathbf{r}_2, \mathbf{p}_1, \mathbf{p}_2)$. Here we will use the PY approximation $g(\mathbf{r}_1, \mathbf{r}_2) \exp[\beta v(\mathbf{r}_1, \mathbf{r}_2)] = 1 + N(\mathbf{r}_1, \mathbf{r}_2)$, where the function $N(\mathbf{r}_1, \mathbf{r}_2)$ is the sum of the nodal diagrams in the expansion of $g(\mathbf{r}_1, \mathbf{r}_2)$. Separation into connecting and blocking parts, $g(\mathbf{r}_1, \mathbf{r}_2) = g^\dagger(\mathbf{r}_1, \mathbf{r}_2, \mathbf{p}_1, \mathbf{p}_2) + g^*(\mathbf{r}_1, \mathbf{r}_2, \mathbf{p}_1, \mathbf{p}_2)$ and $N(\mathbf{r}_1, \mathbf{r}_2) = N^\dagger(\mathbf{r}_1, \mathbf{r}_2, \mathbf{p}_1, \mathbf{p}_2) + N^*(\mathbf{r}_1, \mathbf{r}_2, \mathbf{p}_1, \mathbf{p}_2)$, yields

$$g^\dagger(\mathbf{r}_1, \mathbf{r}_2, \mathbf{p}_1, \mathbf{p}_2) = [f^*(\mathbf{r}_1, \mathbf{r}_2, \mathbf{p}_1, \mathbf{p}_2) + 1][g^\dagger(\mathbf{r}_1, \mathbf{r}_2, \mathbf{p}_1, \mathbf{p}_2) - c^\dagger(\mathbf{r}_1, \mathbf{r}_2, \mathbf{p}_1, \mathbf{p}_2)] + \exp[\beta v(\mathbf{r}_1, \mathbf{r}_2)]g(\mathbf{r}_1, \mathbf{r}_2)f^\dagger(\mathbf{r}_1, \mathbf{r}_2, \mathbf{p}_1, \mathbf{p}_2), \quad (17)$$

or, for a homogeneous system,

$$g^\dagger(\mathbf{r}_{12}, \mathbf{p}_1, \mathbf{p}_2) = [f^*(\mathbf{r}_{12}, \mathbf{p}_1, \mathbf{p}_2) + 1][g^\dagger(\mathbf{r}_{12}, \mathbf{p}_1, \mathbf{p}_2) - c^\dagger(\mathbf{r}_{12}, \mathbf{p}_1, \mathbf{p}_2)] + \exp[\beta v(\mathbf{r}_{12})]g(\mathbf{r}_{12})f^\dagger(\mathbf{r}_{12}, \mathbf{p}_1, \mathbf{p}_2). \quad (18)$$

Equation (14) joined with Eq. (17) or Eq. (16) joined with Eq. (18) give a closed set of equations for $g^\dagger(\mathbf{r}_1, \mathbf{r}_2, \mathbf{p}_1, \mathbf{p}_2)$.

From the function $g_{\text{HE}}^\dagger(\mathbf{r}_1, \mathbf{r}_2, \mathbf{p}_1, \mathbf{p}_2) \equiv g^\dagger(\mathbf{r}_1, \mathbf{r}_2, \mathbf{p}_1, \mathbf{p}_2)$ we define the pair correlation function for energetic clusters $g_{\text{HE}}^\dagger(\mathbf{r}_1, \mathbf{r}_2)$ according to Eq. (1).

2. Solution of the integral equation

Equivalence with an integral equation for polarizable fluids Our problem consists in solving Eq. (16) for $g^\dagger(\mathbf{r}_{12}, \mathbf{p}_1, \mathbf{p}_2)$ closed by the connectedness PY relation (18) with $f^\dagger(\mathbf{r}_i, \mathbf{r}_j, \mathbf{p}_i, \mathbf{p}_j)$ and $f^*(\mathbf{r}_i, \mathbf{r}_j, \mathbf{p}_i, \mathbf{p}_j)$ given by Eqs. (12) and (13). In the closure relation (18), $g(\mathbf{r}_{12})$ is the thermal PDF of the system. In this work we take $g(\mathbf{r}_{12})$ from the solution of the thermal OZ equation in the PY approximation.⁴¹

An equation mathematically equivalent to Eq. (16) has been previously solved by Lado³² in the study of nonpolar polarizable molecules. Explicitly, the equation considered there, which is a generalized OZ equation, relates the fluid total correlation function (TCF) $h(\mathbf{r}_{12}, \mathbf{p}_1, \mathbf{p}_2) = g(\mathbf{r}_{12}, \mathbf{p}_1, \mathbf{p}_2) - 1$ (with $g(\mathbf{r}_{12}, \mathbf{p}_1, \mathbf{p}_2)$ the PDF) and the direct correlation function (DCF) $c(\mathbf{r}_{12}, \mathbf{p}_1, \mathbf{p}_2)$,

$$h(\mathbf{r}_{12}, \mathbf{p}_1, \mathbf{p}_2) = c(\mathbf{r}_{12}, \mathbf{p}_1, \mathbf{p}_2) + \rho \int f(p_3) c(\mathbf{r}_{13}, \mathbf{p}_1, \mathbf{p}_3) h(\mathbf{r}_{32}, \mathbf{p}_3, \mathbf{p}_2) d\mathbf{r}_3 d\mathbf{p}_3, \quad (19)$$

where \mathbf{p}_i denotes the instantaneous dipolar moment induced on molecule i by the remaining molecules of the system. The function $f(p)$ gives the instantaneous dipolar moment thermal distribution which is assumed to have a Gaussian form

$$f(p) = \frac{1}{(2\pi\alpha/\beta)^{3/2}} \exp\left(-\frac{\beta p^2}{2\alpha}\right),$$

where α is the effective polarizability of the molecules.

We observe that Eqs. (16) and (19) are the same if we identify h with g^\dagger , c with c^\dagger , the induced dipolar moment \mathbf{p}_i with the kinetic momentum \mathbf{p}_i and the polarizability α with the particle mass m . There are, however, some differences between the connectivity problem and the polarizable-molecule problem. The form of $f(p)$ does not need to be Gaussian for polarizable molecules; moreover, $f(p)$ is coupled to the TCF. Therefore, the value of the effective polarizability α depends on the density and temperature of the system. In the connectivity problem, however, the equivalent of $f(p)$, $\rho(\mathbf{r}, \mathbf{p})/\rho$, is intrinsically Gaussian and independent of the thermodynamic macrostate of the system.

Another difference between the connectivity problem here and the problem described by Lado is that our closure relation must be complemented with the condition given by Eqs. (12) and (13). In addition, the closures are different. Here we consider the connectedness version of PY whereas an *almost* exact relation between DCF and TCF (van Leeuwen–Groeneveld–De Boer⁴² exact relation with approximate bridge function) is used by Lado.³² Nevertheless, these differences do not affect the general method of solution developed by Lado and we can apply the same principle of expansions in orthogonal functions.

Thus, following Lado,^{26,32} we start by reassigning the unknown function to be the indirect correlation function

$$\gamma^\dagger(\mathbf{r}_{12}, \mathbf{p}_1, \mathbf{p}_2) = g^\dagger(\mathbf{r}_{12}, \mathbf{p}_1, \mathbf{p}_2) - c^\dagger(\mathbf{r}_{12}, \mathbf{p}_1, \mathbf{p}_2), \quad (20)$$

rather than $g^\dagger(\mathbf{r}_{12}, \mathbf{p}_1, \mathbf{p}_2)$, and rewriting Eq. (16) in Fourier representation,

$$\tilde{\gamma}^\dagger(\mathbf{k}, \mathbf{p}_1, \mathbf{p}_2) = \frac{\rho}{(2\pi m k_B T)^{3/2}} \int d\mathbf{p}_3 \exp[-\beta \frac{p_3^2}{2m}] [\tilde{\gamma}^\dagger(\mathbf{k}, \mathbf{p}_1, \mathbf{p}_3) + \tilde{c}^\dagger(\mathbf{k}, \mathbf{p}_1, \mathbf{p}_3)] \tilde{c}^\dagger(\mathbf{k}, \mathbf{p}_3, \mathbf{p}_2). \quad (21)$$

The closure given by the PY relation [Eq. (18)] together with the conditions (12), (13) and (3) yield

$$c^\dagger(\mathbf{r}_{12}, \mathbf{p}_1, \mathbf{p}_2) = \begin{cases} g(\mathbf{r}_{12}) - \gamma^\dagger(\mathbf{r}_{12}, \mathbf{p}_1, \mathbf{p}_2) & \mathbf{p}_{1,2}^2/4m < -v(r_{12}) \text{ and } r_{12} \leq d \\ (\exp[-\beta v(r_{12})] - 1) \gamma^\dagger(\mathbf{r}_{12}, \mathbf{p}_1, \mathbf{p}_2) & \mathbf{p}_{i,j}^2/4m \geq -v(r_{12}) \text{ or } r_{1,2} > d \end{cases} \quad (22)$$

The connectivity part of the PDF is then computed from γ^\dagger as

$$g^\dagger(\mathbf{r}_{12}, \mathbf{p}_1, \mathbf{p}_2) = \begin{cases} g(\mathbf{r}_{12}) & \mathbf{p}_{1,2}^2/4m < -v(r_{12}) \text{ and } r_{12} \leq d \\ \exp[-\beta v(r_{12})] \gamma^\dagger(\mathbf{r}_{12}, \mathbf{p}_1, \mathbf{p}_2) & \mathbf{p}_{i,j}^2/4m \geq -v(r_{12}) \text{ or } r_{1,2} > d \end{cases} \quad (23)$$

The Fourier transform in Eq. (21) and its inverse are defined as

$$\tilde{f}(\mathbf{k}) = \int d\mathbf{r} f(\mathbf{r}) e^{-i\mathbf{k}\cdot\mathbf{r}}, \quad (24)$$

$$f(\mathbf{r}) = \frac{1}{(2\pi)^3} \int d\mathbf{k} \tilde{f}(\mathbf{k}) e^{i\mathbf{k}\cdot\mathbf{r}}. \quad (25)$$

The standard method for solving Eqs. (21) and (22) is to explicitly break out the angular dependence of all functions in the form of expansions in spherical harmonics.⁴³

Expansion of the pair functions in orthogonal polynomials The essential point in the integral equation solution method³² is the expansion of all the pair functions, like $\gamma^\dagger(\mathbf{r}_{12}, \mathbf{p}_1, \mathbf{p}_2)$, in terms of orthogonal polynomials. First we expand

$$\begin{aligned} \gamma^\dagger(\mathbf{r}_{12}, \mathbf{p}_1, \mathbf{p}_2) &= \gamma^\dagger(r, p_1, p_2, \omega_1, \omega_2) \\ &= 4\pi \sum_{l_1, l_2, m} \gamma_{l_1 l_2 m}^\dagger(r, p_1, p_2) Y_{l_1 m}(\omega_1) Y_{l_2 \bar{m}}(\omega_2), \end{aligned} \quad (26)$$

where ω_1 and ω_2 are the directions of the momenta \mathbf{p}_1 and \mathbf{p}_2 , $\bar{m} = -m$, and $m = -l, -l+1, \dots, l$. In this and similar expressions, the vector \mathbf{r}_{12} has been implicitly chosen as the z direction in the specification of the Euler angles $\omega = (\theta, \phi)$. The spherical harmonics satisfy the orthogonality condition

$$\int d\omega Y_{lm}(\omega) Y_{l'm'}^*(\omega) = \delta_{ll'} \delta_{mm'}, \quad (27)$$

so that the coefficients of the expansion (26) are immediately obtainable as

$$\gamma_{l_1 l_2 m}^\dagger(r, p_1, p_2) = \frac{1}{4\pi} \int d\omega_1 d\omega_2 \gamma^\dagger(r, p_1, p_2, \omega_1, \omega_2) Y_{l_1 m}(\omega_1) Y_{l_2 \bar{m}}^*(\omega_2). \quad (28)$$

Similarly, we can break out the kinetic momentum dependence in the form of expansions in polynomials of p ,

$$\gamma_{l_1 l_2 m}^\dagger(r, \mathbf{p}_1, \mathbf{p}_2) = \sum_{n_1, n_2} \gamma_{l_1 l_2 m}^{\dagger n_1 n_2}(r) Q_{n_1 l_1}(p_1) Q_{n_2 l_2}(p_2), \quad (29)$$

which are constructed to be orthogonal with Gaussian weight function

$$f(p) = \frac{1}{(2\pi m/\beta)^{3/2}} \exp[-\beta p^2/2m], \quad (30)$$

namely,

$$4\pi \int_0^\infty dp p^2 f(p) Q_{nl}(p) Q_{n'l'}(p) = \delta_{nn'}. \quad (31)$$

The coefficients of the expansion are then again obtainable by quadratures,

$$\begin{aligned} \gamma_{l_1 l_2 m}^{\dagger n_1 n_2}(r) &= \int_0^\infty dp_1 dp_2 [4\pi p_1^2 f(p_1)] [4\pi p_2^2 f(p_2)] \\ &\quad \times \gamma_{l_1 l_2 m}^\dagger(r, p_1, p_2) Q_{n_1 l_1}(p_1) Q_{n_2 l_2}(p_2). \end{aligned} \quad (32)$$

Given the Gaussian form of the weight function $f(p)$, the associated polynomials are⁴⁴

$$Q_{nl}(p) = \left[\frac{\Gamma(\frac{1}{2}(n-l)+1) \Gamma(\frac{3}{2})}{\Gamma(\frac{1}{2}(n+l)+\frac{3}{2})} \right]^{1/2} \left(\frac{\beta p^2}{2m} \right)^{l/2} L_{(n-l)/2}^{l+1/2} \left(\frac{\beta p^2}{2m} \right), \quad (33)$$

where $L_n^b(t)$ are the associated Laguerre polynomials⁴⁵ and $\Gamma(z)$ is the gamma function.

Accordingly, all the functions in \mathbf{r} -space are expanded in the form

$$\gamma^\dagger(\mathbf{r}, \mathbf{p}_1, \mathbf{p}_2) = 4\pi \sum_{n_1, n_2, l_1, l_2, m} \gamma_{l_1 l_2 m}^{\dagger n_1 n_2}(r) Q_{n_1 l_1}(p_1) Q_{n_2 l_2}(p_2) Y_{l_1 m}(\omega_1) Y_{l_2 \bar{m}}(\omega_2), \quad (34)$$

where the z axis is along \mathbf{r} and the summation indices satisfy the constraints

$$\begin{aligned} n &= 0, 1, 2, \dots, \\ l &= n, n-2, n-4, \dots, 1 \text{ or } 0, \\ m &= 0, \pm 1, \pm 2, \dots, \pm l. \end{aligned} \quad (35)$$

The coefficients of Eq. (34) can be obtained as

$$\begin{aligned} \gamma_{l_1 l_2 m}^{\dagger n_1 n_2}(r) &= 4\pi \int d\mathbf{p}_1 d\mathbf{p}_2 f(p_1) f(p_2) \gamma^\dagger(\mathbf{r}, \mathbf{p}_1, \mathbf{p}_2) \\ &\quad \times Q_{n_1 l_1}(p_1) Q_{n_2 l_2}(p_2) Y_{l_1 m}^*(\omega_1) Y_{l_2 \bar{m}}^*(\omega_2) \end{aligned} \quad (36)$$

with $f(p)$ given by Eq. (30). The complete orthonormality condition is

$$4\pi \int d\mathbf{p} f(p) Q_{nl}(p) Q_{n'l'}(p) Y_{lm}(\omega) Y_{l'm'}^*(\omega) = \delta_{nn'} \delta_{ll'} \delta_{mm'}. \quad (37)$$

The functions in \mathbf{k} can be expanded in a similar way. Setting the z axis along \mathbf{k} , we write

$$\tilde{\gamma}^\dagger(\mathbf{k}, \mathbf{p}_1, \mathbf{p}_2) = 4\pi \sum_{n_1, n_2, l_1, l_2, m} \tilde{\gamma}_{l_1 l_2 m}^{\dagger n_1 n_2}(k) Q_{n_1 l_1}(p_1) Q_{n_2 l_2}(p_2) Y_{l_1 m}(\omega_1) Y_{l_2 \bar{m}}(\omega_2). \quad (38)$$

However, the angles ω_1 and ω_2 are referred to different axes in Eqs. (34) and (38), so that the coefficients in these expansions are not themselves mutual Fourier transforms.

Introducing the expansion for $\tilde{\gamma}^\dagger(\mathbf{k}, \mathbf{p}_1, \mathbf{p}_2)$ and the corresponding expansion for $\tilde{c}^\dagger(\mathbf{k}, \mathbf{p}_1, \mathbf{p}_2)$, one finds that the OZ-like equation in Fourier space [Eq. (21)] goes over into a set of matrix equations for the respective coefficients,

$$\tilde{\gamma}_{l_1 l_2 m}^{\dagger n_1 n_2}(k) = (-1)^m \rho \sum_{n_3, l_3} \left[\tilde{\gamma}_{l_1 l_3 m}^{\dagger n_1 n_3}(k) + \tilde{c}_{l_1 l_3 m}^{\dagger n_1 n_3}(k) \right] \tilde{c}_{l_3 l_2 m}^{\dagger n_3 n_2}(k). \quad (39)$$

Numerical procedure To obtain a numerical solution for the set of equations (16) and (18) one needs the discrete versions of the expansion for $\gamma^\dagger(\mathbf{r}, \mathbf{p}_1, \mathbf{p}_2)$ [Eq. (34)] and the quadratures for the coefficients $\gamma_{l_1 l_2 m}^{\dagger n_1 n_2}(r)$ [Eq. (36)]; these are

$$\begin{aligned} \gamma^\dagger(r, i_1, i_2, k_1, k_2, j) &= 4\pi \sum_{n_1, n_2, l_1, l_2, m} \gamma_{l_1 l_2 m}^{\dagger n_1 n_2}(r) Q_{n_1 l_1}(i_1) Q_{n_2 l_2}(i_2) \\ &\quad \times \mathcal{P}_{l_1 m}(k_1) \mathcal{P}_{l_2 \bar{m}}(k_2) \nu_m T_m(j) \end{aligned} \quad (40)$$

and

$$\begin{aligned} \gamma_{l_1 l_2 m}^{\dagger n_1 n_2}(r) &= \sum_{i_1, i_2, k_1, k_2, j=1}^{N_p} w(i_1) w(i_2) w(k_1) w(k_2) w(j) \gamma^\dagger(r, i_1, i_2, k_1, k_2, j) \\ &\quad \times Q_{n_1 l_1}(i_1) Q_{n_2 l_2}(i_2) \mathcal{P}_{l_1 m}(k_1) \mathcal{P}_{l_2 \bar{m}}(k_2) (-1)^m T_m(j). \end{aligned} \quad (41)$$

In Eq. (40), $\nu_0 = 1$ and $\nu_m = 2$ for $m > 0$. In Eq. (41), Gaussian quadratures are being used, with the argument i standing for $t_i = \beta p_i^2/2m$, the i th root of $L_{N_p}^{1/2}(t)$, k for $x_k = \cos \theta_k$, the k th root of $P_{N_p}(x)$, and j for $y_j = \cos \phi_j$, the j th root of $T_{N_p}(y)$, where $L_{N_p}^{1/2}(t)$, $P_{N_p}(x)$, and $T_{N_p}(y)$ are the associated Laguerre, Legendre, and Chebyshev polynomials, respectively, all of order N_p ; here the associated Legendre functions $\mathcal{P}_{lm}(x)$ are normalized to 2. The w are the corresponding Gaussian weights,

$$w(i) = \left\{ t_i \left[L_{N_p}^{1/2'}(t_i) \right]^2 \right\}^{-1}, \quad (42)$$

$$w(k) = \left\{ (1 - x_k^2) \left[P_{N_p}'(x_k) \right]^2 \right\}^{-1}, \quad (43)$$

$$w(j) = N_p^{-1}, \quad (44)$$

where the prime denotes derivative.

The solution follows an iterative procedure. The preparatory stages of the calculation consist of (i) computing the thermal PDF $g(r_{12})$ for the Lennard–Jones fluid over a suitable mesh using the PY equation, (ii) reducing the momentum space to the discrete set of points $\mathbf{p}_{i,k,j} \equiv (p_i, \theta_k, \phi_j)$ with $i, k, j = 1, 2, \dots, N_p$, and (iii) identifying the subset of states — within all possible configurational states $(r_{12}, \mathbf{p}_1, \mathbf{p}_2)$ of a pair of particles— that correspond to a bonded pair.

We construct a logical array $B(r_{12}, \mathbf{p}_{1;i,k,j}, \mathbf{p}_{2;i,k,j})$ of dimension seven whose value is TRUE if the configurational state of the pair of particles corresponds to a bonded state, *i.e.*, if $\mathbf{p}_{1,2}^2/4m < -v(r_{12})$ and $r_{12} \leq d$. If instead this condition is not satisfied, then $B(r_{12}, \mathbf{p}_{1;i,k,j}, \mathbf{p}_{2;i,k,j})$ is FALSE.

The iterative solution of Eqs. (39) and (22) starts by guessing the initial values of the coefficients $\gamma_{l_1 l_2 m}^\dagger{}^{n_1 n_2}(r_{12})$. Then, if $B(r_{12}, \mathbf{p}_{1;i,k,j}, \mathbf{p}_{2;i,k,j})$ is TRUE, following Eq. (23) we take

$$g_{l_1 l_2 m}^\dagger{}^{n_1 n_2}(r_{12}) = \begin{cases} g(r_{12}) & \text{if } n_1 = n_2 = l_1 = l_2 = m = 0 \\ 0 & \text{otherwise.} \end{cases} \quad (45)$$

If instead $B(r_{12}, \mathbf{p}_{1;i,k,j}, \mathbf{p}_{2;i,k,j})$ is FALSE then, following Eq. (23), we take

$$g_{l_1 l_2 m}^\dagger{}^{n_1 n_2}(r_{12}) = \exp[-\beta v(r_{12})] \gamma_{l_1 l_2 m}^\dagger{}^{n_1 n_2}(r_{12}). \quad (46)$$

Knowing $g_{l_1 l_2 m}^\dagger{}^{n_1 n_2}(r_{12})$ and $\gamma_{l_1 l_2 m}^\dagger{}^{n_1 n_2}(r_{12})$ for all the mesh points and allowed indices, we can calculate [see Eqs. (20) or (22)]

$$c_{l_1 l_2 m}^\dagger{}^{n_1 n_2}(r_{12}) = g_{l_1 l_2 m}^\dagger{}^{n_1 n_2}(r_{12}) - \gamma_{l_1 l_2 m}^\dagger{}^{n_1 n_2}(r_{12}). \quad (47)$$

We now need to transform the coefficients $c_{l_1 l_2 m}^\dagger{}^{n_1 n_2}(r_{12})$ in real space into coefficients $\tilde{c}_{l_1 l_2 m}^\dagger{}^{n_1 n_2}(k)$ in Fourier space. However, as we have mentioned, they are not themselves Fourier transforms of each other. Thus, we have to assemble the complete function first using the equation analogous to (40) for $c^\dagger(r, i_1, i_2, k_1, k_2, j)$ and then use a generalized fast-transform algorithm³² to calculate $\tilde{c}^\dagger(k, i_1, i_2, k_1, k_2, j)$. Using the equation analogous to (41) in \mathbf{k} -space we then have the coefficients $\tilde{c}_{l_1 l_2 m}^\dagger{}^{n_1 n_2}(k)$ for the complete set of indices and all the values of k on an adequate mesh. The coefficients $\tilde{\gamma}_{l_1 l_2 m}^\dagger{}^{n_1 n_2}(k)$ are then easily calculated by using the OZ-like equation in Fourier space [see Eq. (39)]. Again, we assemble the complete function $\tilde{\gamma}^\dagger(k, i_1, i_2, k_1, k_2, j)$ [using the Fourier space version of Eq. (40)]. The inverse transform $\gamma^\dagger(r_{12}, i_1, i_2, k_1, k_2, j)$ is calculated with the fast-transform algorithm and so new coefficients $\gamma_{l_1 l_2 m}^\dagger{}^{n_1 n_2}(r_{12})$ [obtained from Eq. (41)] are available to start again the iterative cycle. The iterations end when convergence is reached, as measured by

$$\left| \left[\gamma_{l_1 l_2 m}^\dagger{}^{n_1 n_2}(r_{12}) \right]_{(s+1)\text{th iteration}} - \left[\gamma_{l_1 l_2 m}^\dagger{}^{n_1 n_2}(r_{12}) \right]_{s\text{th iteration}} \right| < \epsilon \quad (48)$$

for the complete set of indices. The tolerance ϵ is set to 0.0001.

The pair correlation function for an energetic cluster [see Eq. (1)] is finally given by

$$g_{\text{HE}}^\dagger(r_{12}) = g_{000}^{\dagger 00}(r_{12}), \quad (49)$$

where the orthonormality condition [see Eq. (37)] has been used.

IV. RESULTS

Firstly, as a complement to Fig. 1, we show in Fig. 3 the cluster pair correlation functions $g_{\text{HE}}^\dagger(r_{12})$ and $g_{\text{VA}}^\dagger(r_{12})$ obtained from MD using $N = 4000$ particles for $(\rho^*, T^*) = (0.24, 1.4)$, $(\rho^*, T^*) = (0.42, 1.4)$ and $(\rho^*, T^*) = (0.429, 1.4)$ where $\rho^* = \rho\sigma^3$ and $T^* = k_B T/\varepsilon$. The two last points correspond, respectively, to the VA and HE percolation loci for $T^* = 1.4$. The main peak in the cluster correlation functions is higher for the VA criterion than for the HE criterion. This implies that there is a larger tendency to consider as directly connected two neighbor particles by this criterion. However, as it can be appreciated in Fig. 3, $g_{\text{VA}}^\dagger(r_{12})$ falls faster than $g_{\text{HE}}^\dagger(r_{12})$ for larger r . This contrasting behavior can be understood by analyzing the cluster size distribution function $n(s)$, which gives the number of clusters in the system consisting of s particles. Figure 4 shows $n(s)$ for the same three state points as Fig. 3. We can see here that the VA criterion identifies a larger amount of clusters than the HE criterion up to a certain size—which depends on the density. However the HE criterion always identifies some clusters larger than the largest clusters identified by the VA criterion. This means that the cluster correlation function is more long ranged for the HE clusters.

Figs. 5 and 6 show the theoretical cluster correlation functions $g_{\text{HE}}^\dagger(r_{12})$ and $g_{\text{VA}}^\dagger(r_{12})$, calculated by solving the corresponding integral equations [Eqs.(16),(18) and (7),(8), respectively] following the methods indicated in the previous section, together with the corresponding MD simulation results. We show the curves at temperatures $T^* = 1.4$ and 3.0 and densities $\rho^* = 0.24$ and 0.55 , respectively. This values are rather far from the percolation loci since we have been unable so far to obtain convergence of the numerical algorithms at higher densities when the HE criterion is considered.

With generality, Figs. 5 and 6 say that the theoretical results follow quite well the trends of the corresponding simulations for each criterion.

V. CONCLUSIONS

We have shown that, contrary to our previous results (Ref. I), the VA energetic criterion is, in general, a good approximation to the full HE criterion for estimating the percolation loci in a Lennard–Jones fluid. However, the cluster correlation functions are somewhat different in the VA case. We have obtained the cluster pair correlation functions for both energetic criteria through the numerical integration of connectedness OZ integral equations. In particular, we have used a generalization of the integral equations that allows the implementation of the HE criterion. The theoretical results agree rather well with the simulations.

Acknowledgments

This work was supported by CONICET, CICPBA and UNLP (Argentina). We thank F. Lado for providing the source code of his algorithm for the solution of the nonpolar polarizable Lennard–Jones fluid.

-
- * Electronic address: luis@iflysib.unlp.edu.ar
- ¹ B. Senger, P. Schaaf, D. S. Corti, R. Bowles, J. C. Voegel and H. Reiss, *J. Chem. Phys.* **110**, 6421 (1999).
 - ² F.W. Starr, J.K. Nielsen and H.E. Stanley, *Phys. Rev. Lett.* **82**, 2294 (1999).
 - ³ S. H. Simon, V. Dobrodavjević, and R. M. Strat, *J. Chem. Phys.* **94**, 7360 (1991).
 - ⁴ S. H. Chen, J. Rouch, F. Sciortino and P. Tartaglia, *J. Phys.: Condens. Matter* **6**, 10855 (1994).
 - ⁵ A. Coniglio, H. E. Stanley, and W. Klein, *Phys. Rev. B* **25**, 6805 (1982).
 - ⁶ B. D. Butler, H. J. M. Hanley, D. Hansen and D. J. Evans, *Phys. Rev. Lett.* **74**, 4468 (1995).
 - ⁷ H. E. Stanley, R. L. Blumberg, and A. Geiger, *Phys. Rev. B*, **28**, 1626 (1983).
 - ⁸ G. S. Grest and M. H. Cohen, in *Percolation Structures and Processes*, edited by G. Deutscher, R. Zallen and J. Adler (Adam Hilger, Bristol, 1983).
 - ⁹ H.-P. Wittmann, K. Kremer, and K. Binder, *J. Chem. Phys.* **96**, 6291 (1992).
 - ¹⁰ L. A. Pugnaloni, G. C. Barker and A. Mehta, *Adv. Complex Systems* **4**, 289 (2001).
 - ¹¹ M. Sahimi, *Applications of Percolation Theory* (Taylor and Francis, London, 1994).
 - ¹² G. Grimmett, *Percolation* (Springer-Verlag, Berlin, 1999).
 - ¹³ T.L. Hill, *J. Chem. Phys.*, **23**, 617 (1955).
 - ¹⁴ A. Coniglio, U. De Angelis, A. Forlani, *J. Phys. A: Math. Gen.*, **10**, 1123 (1977).
 - ¹⁵ L. A. Pugnaloni, and F. Vericat, *J. Chem. Phys.* **116**, 1097 (2002).
 - ¹⁶ For example, in the conductor–insulator transition of water in oil microemulsions, two micelles are considered bonded if they can share charge carriers.⁴ However, in the identification of bridges formed by grains within granular materials, two grains are bonded if they stabilize each other.¹⁰
 - ¹⁷ L. A. Pugnaloni, arXiv:con-mat0406713 (2004).
 - ¹⁸ G. Stell, *J. Phys. A: Math. Gen.*, **17**, L885 (1984).
 - ¹⁹ Y. C. Chiew and E. D. Glandt, *J. Phys. A: Math. Gen.* **16**, 2599 (1983).
 - ²⁰ T. DeSimone, S. Demoulini, and R. M. Strat, *J. Chem. Phys.* **85**, 391 (1986).
 - ²¹ D. Laría and F. Vericat, *Phys. Rev. A* **43**, 1932 (1991).
 - ²² C.M. Carlevaro, C.O. Stoico, C.O. and F. Vericat, *J. Phys.: Condens. Matter*, **8**, 1857 (1996).
 - ²³ F. H. Stillinger, *J. Chem. Phys.* **38**, 1486 (1963).
 - ²⁴ L. A. Pugnaloni and F. Vericat, *Phys. Rev. E* **61**, R6067 (2000).
 - ²⁵ L. A. Pugnaloni, I. F. Marquez, and F. Vericat, *Physica A* **321**, 398 (2003).
 - ²⁶ G.J. Zarragoicoechea, L.A. Pugnaloni, F. Lado, E. Lomba, E. and F. Vericat. *Phys. Rev. E*, **71**, 031202/1-9 (2005).
 - ²⁷ Interestingly, Campi *et al.*³⁰ found that picking up velocities at random from a Boltzmann distribution instead of using the real velocities of the particles yield the same results for the percolation properties of the Lennard–Jones fluid in the HE criterion.
 - ²⁸ R. Soto and P. Cordero, *Phys. Rev. E* **56**, 2851 (1997).
 - ²⁹ R. Soto and P. Cordero, *J. Chem. Phys.* **108**, 8989 (1998).
 - ³⁰ X. Campi, H. Krivine, N. Sator, *Physica A* **296**, 24 (2001).
 - ³¹ A. Coniglio, *J. Phys: Condens. Matter* **13**, 9039 (2001).
 - ³² F. Lado, *Phys. Rev. E* **55**, 426 (1997).
 - ³³ M. P. Allen and D. J. Tildesley, *Computer Simulation of Liquids* (Clarendon Press, Oxford, 1987).

- ³⁴ S. D. Stoddard, *J. Comp. Phys.* **27**, 291 (1978).
- ³⁵ N.A. Seaton and E.D. Glandt, *J. Chem. Phys.* **86**, 4668 (1987).
- ³⁶ S.B. Lee and S. Torquato, *Phys. Rev. A* **41**, 5338 (1990).
- ³⁷ A. Z. Panagiotopoulos, *Mol. Phys.* **61**, 813 (1987).
- ³⁸ J. P. Hansen and L. Verlet, *Phys. Rev.* **184**, 161 (1969).
- ³⁹ D. S. Gaunt and M. F. Sykes, *J. Phys. A: Math. Gen.* **16**, 783 (1983).
- ⁴⁰ S. Labik, A. Malijevsky and P Voňka, *Mol. Phys.* **56**, 709 (1985).
- ⁴¹ J. P. Hansen and I. R. McDonald, *Theory of Simple Liquids* (Academic Press, London, 1976).
- ⁴² J. M. J. van Leeuwen, J. Groeneveld and J. De Boer, *Physica* **25**, 792 (1959).
- ⁴³ C. G. Gray and K. E. Gubbins, *Theory of Molecular Fluids* (Clarendon, Oxford, 1984).
- ⁴⁴ P. M. Morse and H. Feshbach, *Methods of Theoretical Physics* (McGraw-Hill, New York, 1953).
- ⁴⁵ *Handbook of Mathematical Functions*, edited by M. Abramowitz and I. A. Stegun (Dover, New York, 1965). Chap. 22.

Figure Captions

Figure 1. Coexistence and percolation curves for the Lennard–Jones fluid. Open diamonds correspond to the gas–liquid coexistence.³⁷ Open squares correspond to the fluid–solid coexistence.³⁸ The percolation loci for the HE criterion (open circles) and for the VA criterion (open triangles) are compared. Solid circles correspond to the percolation loci for the HE criterion from Campi *et al.*³⁰ Lines are only to guide the eye.

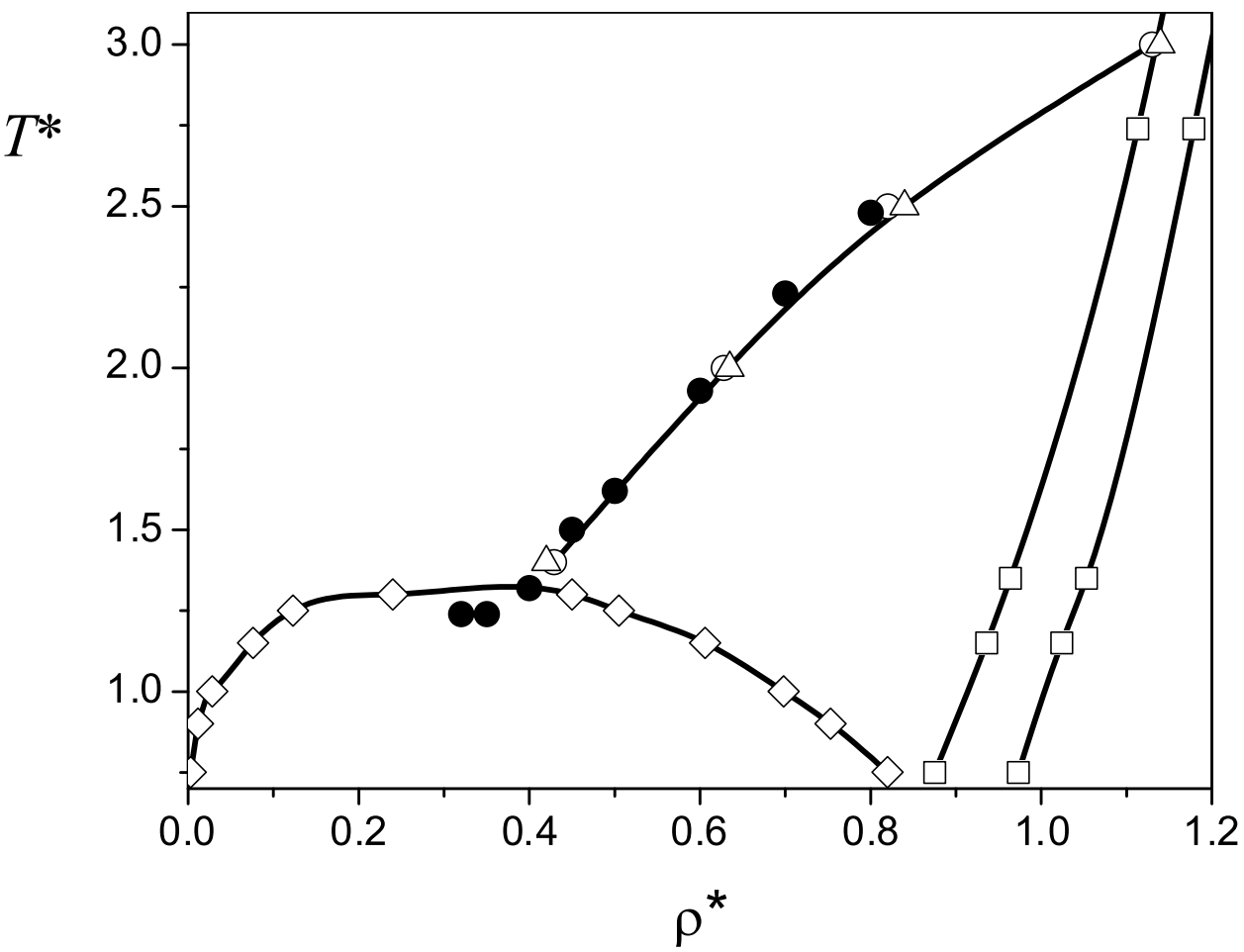
Figure 2. Percolation density for the HE criterion as a function of $L^{-1/\nu}$. L is the simulation box length and $\nu = 0.88$.³⁹ The largest system corresponds to 4000 particles. The system size used for the calculation of the percolation curves in Fig. 1 is indicated by an arrow. The inset shows the percolation threshold as a function of d for the 1372-particle system. The arrow shows the value of d used in the rest of the paper.

Figure 3. Connectedness correlation function for the HE criterion (solid line) and for the VA criterion (dotted line) at $T^* = 1.4$ for various densities. The results for $\rho^* = 0.42$ and 0.429 correspond to the percolation loci for the VA and the HE criterion, respectively.

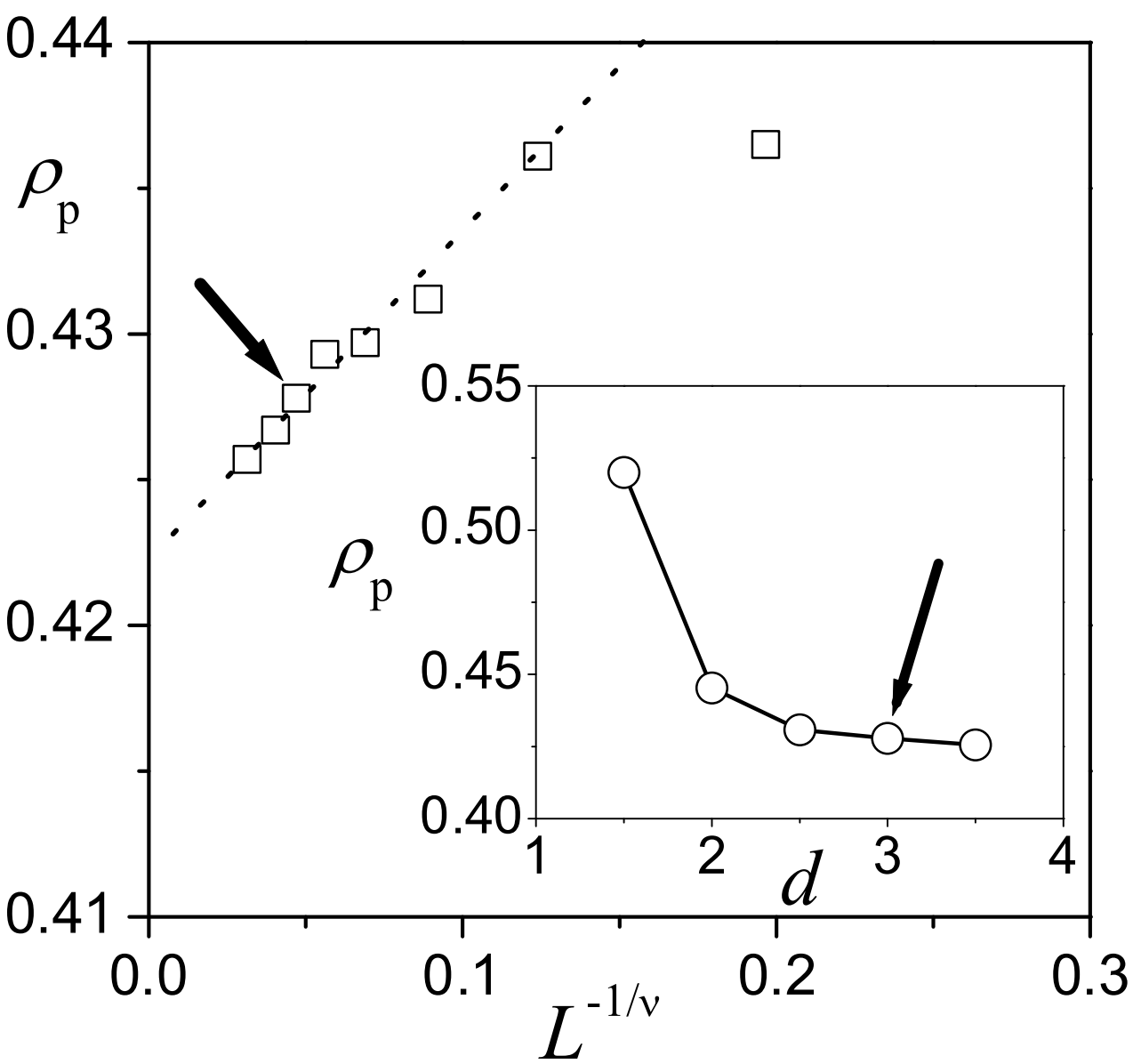
Figure 4. Cluster size distribution for the HE criterion (black solid line) and for the VA criterion (red dotted line) at $T^* = 1.4$ for the same densities as in Fig. 2.

Figure 5. Connectedness correlation function for the HE criterion (solid line and open circles) and for the VA criterion (dotted line and open triangles) at $T^* = 1.4$ and $\rho^* = 0.24$. Lines correspond to the solution of the connectedness OZ equations closed with the connectedness PY relation. Symbols correspond to MD.

Figure 6. Connectedness correlation function for the HE criterion (solid line and open circles) and for the VA criterion (dotted line and open triangles) at $T^* = 3.0$ and $\rho^* = 0.55$.

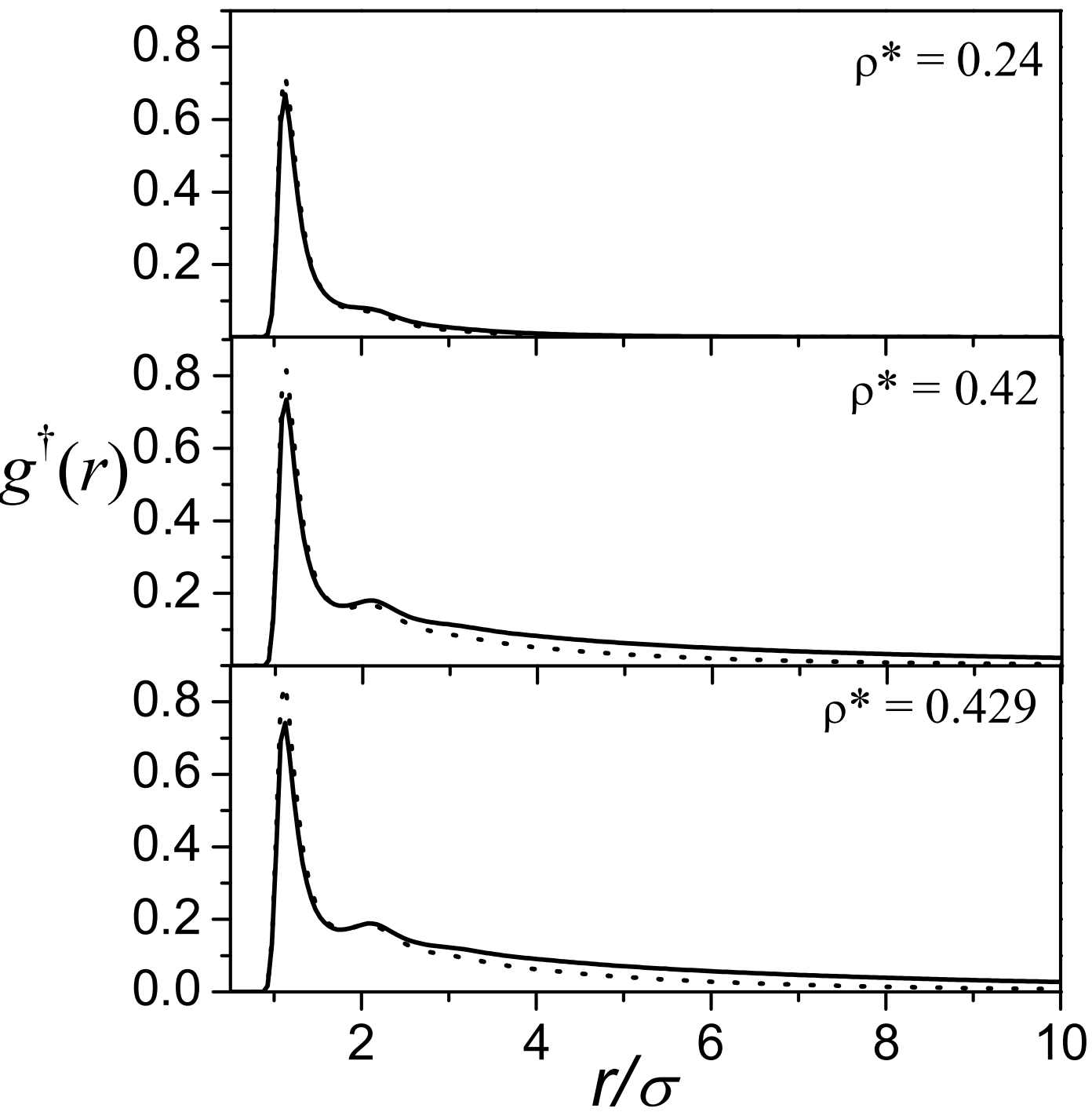


Pugnaroni-Zarragoicoechea-Vericat
Fig. 1

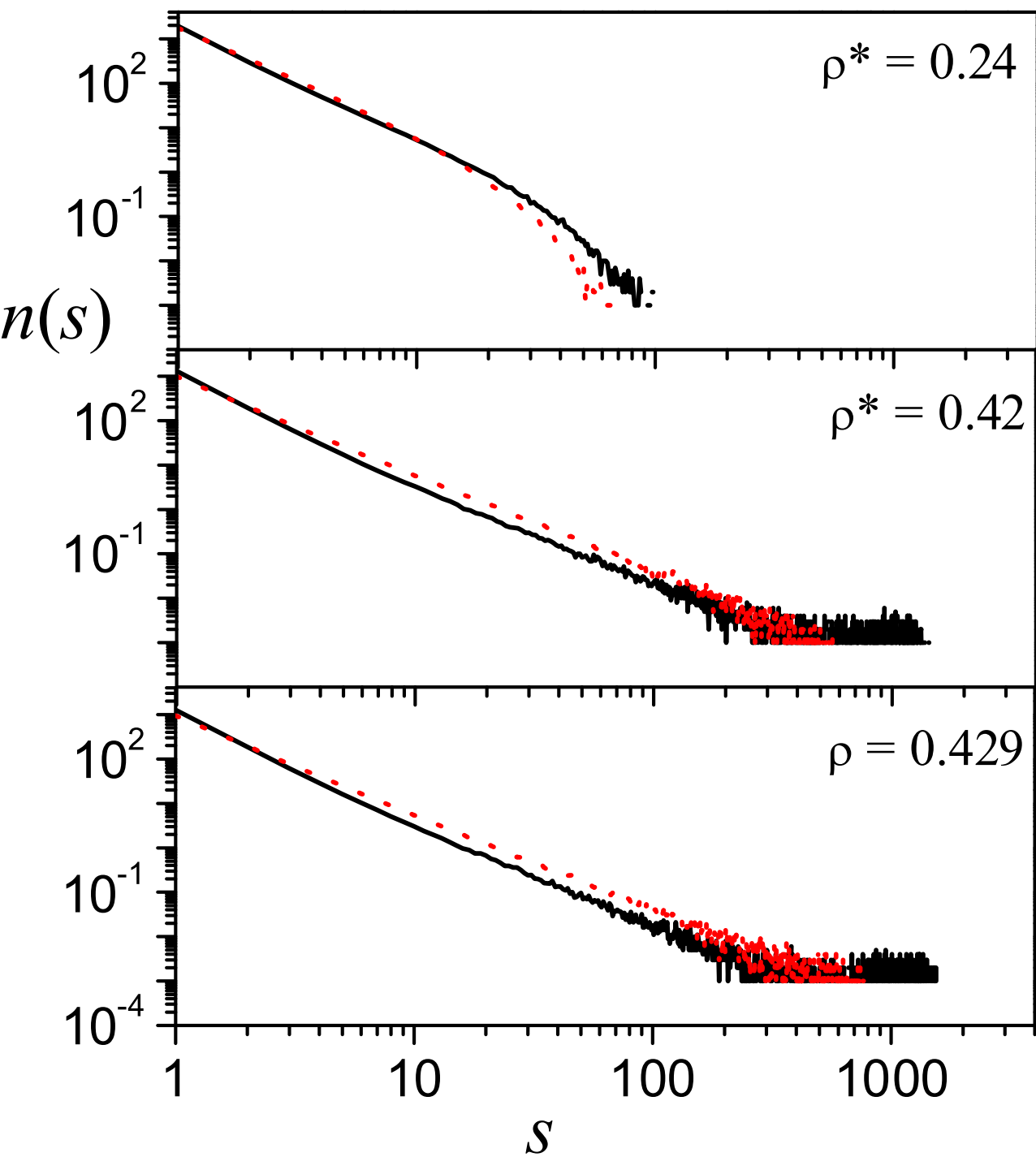


Pugnaloni-Zarragoicoechea-Vericat

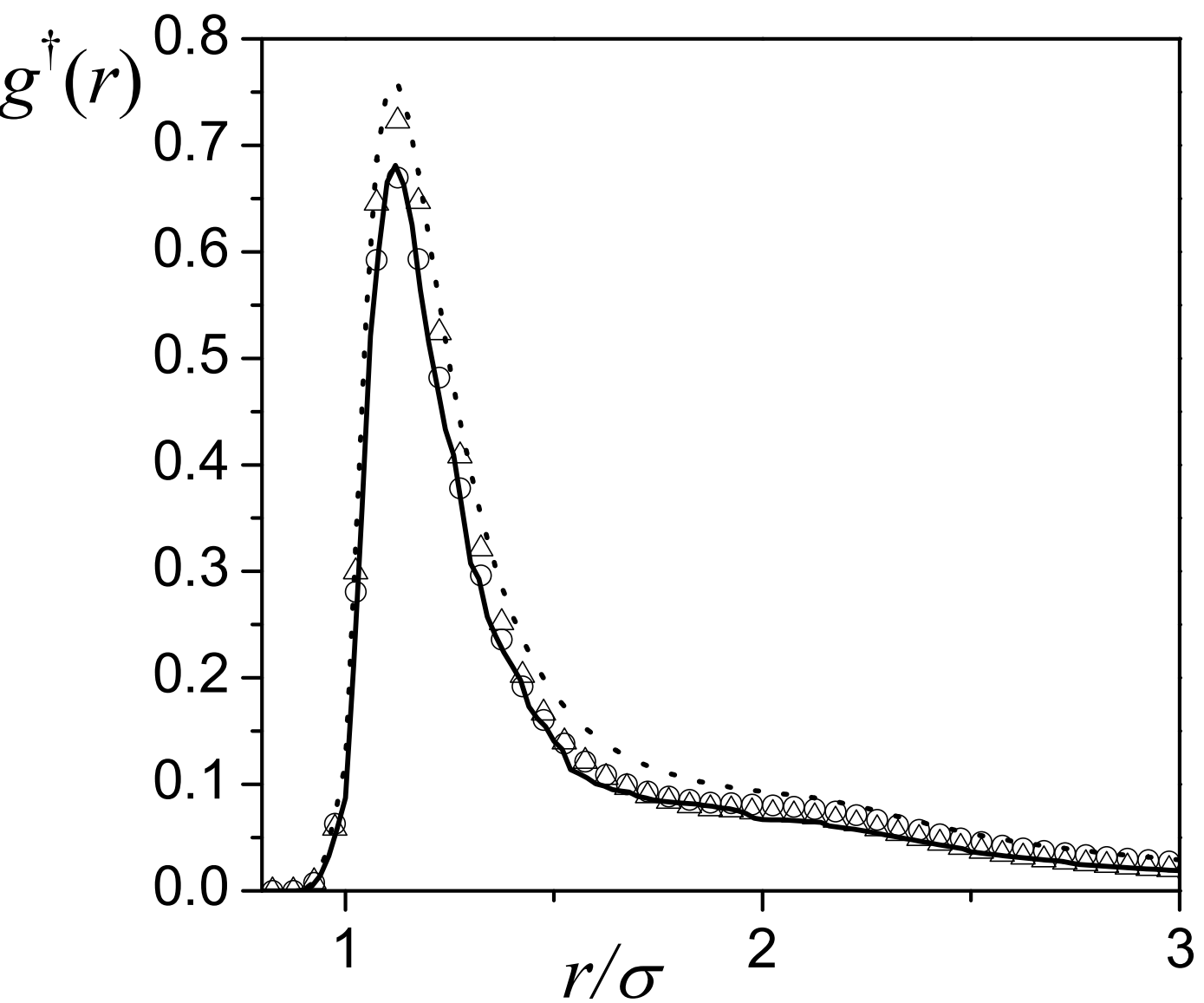
Fig. 2



Pugnaloni-Zarragoicoechea-Vericat
Fig. 3

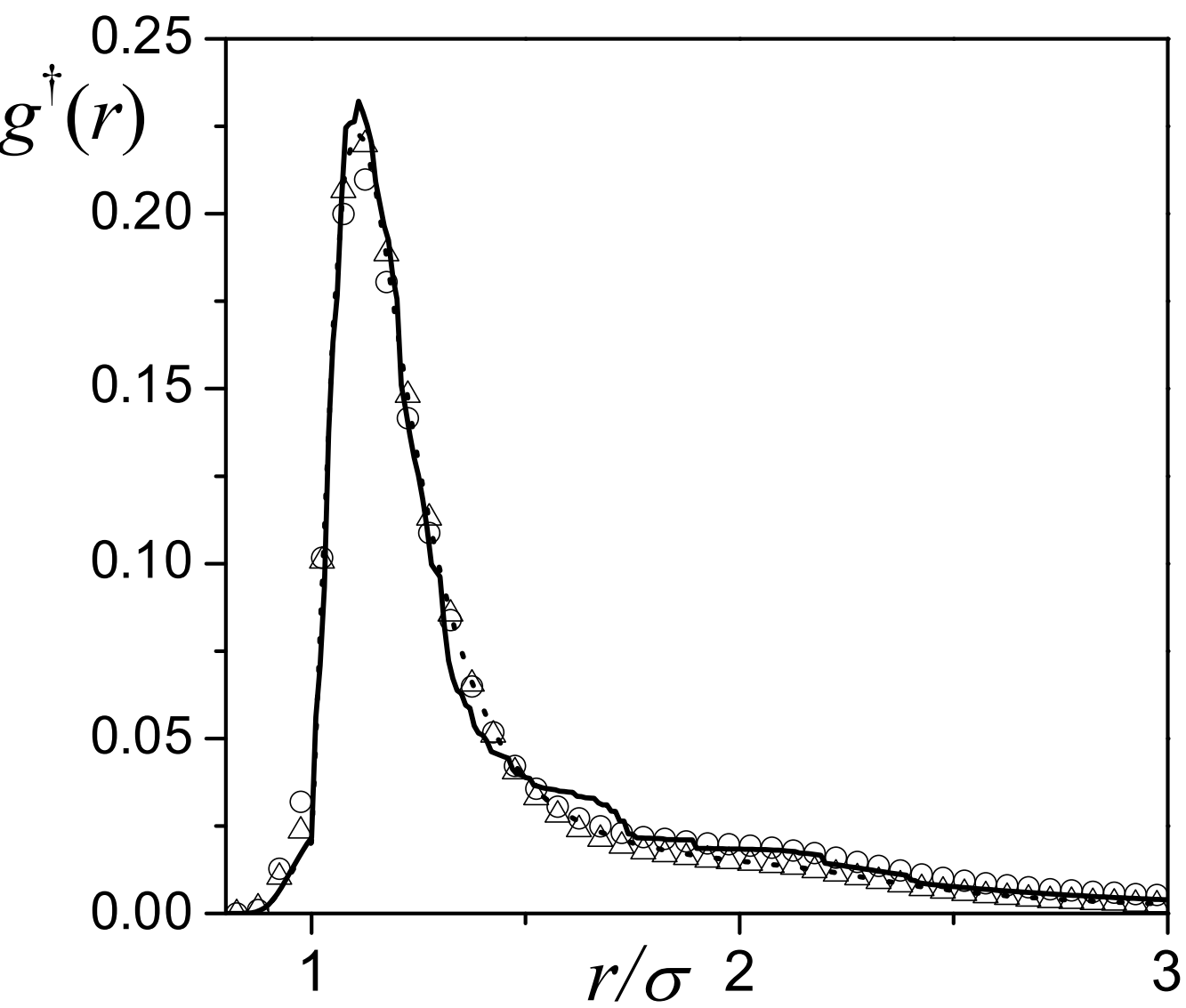


Pugnaloni-Zarragoicoechea-Vericat
Fig. 4



Pugnaloni-Zarragoicoechea-Vericat

Fig. 5



Pugnaloni-Zarragoicoechea-Vericat
Fig. 6