

# In vitro interaction between *Bacillus megaterium* strains and Caco-2 cells

Ana C. López,<sup>1</sup> Jessica Minnaard,<sup>2</sup> Pablo F. Pérez,<sup>2,3</sup> Adriana M. Alippi<sup>1\*</sup>

<sup>1</sup>Bacteriology Unit, Phytopathology Research Center, Faculty of Agricultural and Forestry Sciences, National University of La Plata, La Plata, Argentina. <sup>2</sup>Center of Research and Development in Food Cryotechnology (CONICET), La Plata, Argentina.

<sup>3</sup>Chair of Microbiology, Faculty of Exact Sciences, National University of La Plata, La Plata-Argentina

Received 3 January 2013 · Accepted 3 March 2013

**Summary.** To further our understanding of the virulence potential of *Bacillus megaterium* strains, cell association and invasion assays were conducted in vitro by infecting human enterocytes (Caco-2 cells) with 53 strains of this bacterium isolated from honey. Two series of experiments were performed: (i) necrosis and cell detachment assays with the supernatants of bacterial culture filtrates from 16-h cultures and (ii) adhesion/invasion assays in which cultured enterocytes incubated with bacteria from 3-h cultures were resuspended in Dulbecco's modified Eagle's medium and chloramphenicol. The detachment of Caco-2 cells was evaluated by staining the cells with crystal violet. Necrosis was assessed by fluorescence microscopy of cells labeled with propidium iodide. Association (adhesion plus invasion) was determined by plate counts and invasion in an aminoglycoside protection assay. The results showed that spent culture supernatants detached and necrotized Caco-2 cells in a strain-dependent manner. Seven out of 53 *B. megaterium* filtered culture supernatants caused complete cell detachment. Suspensions of these same bacterial strains adhered and invaded enterocytes in 2-h infection experiments. To our knowledge, this is the first report on the interaction between *B. megaterium* and intestinal epithelial Caco-2 cells. [Int Microbiol 2013; 16(1):27-33]

**Keywords:** *Bacillus megaterium* · Caco-2 cells · adhesion · cellular necrosis · spent culture supernatant · honey

## Introduction

Due to its natural properties and to industrial control measures, commercially sold honey has minimal microbial contamination. Nevertheless, it may contain yeasts and spore-forming bacteria [41]. Although vegetative forms of disease-causing bacteria have not been found in honey, bacterial spores, when present, can remain viable for long periods without losing their infectivity.

Several studies have shown that *Bacillus* and *Paenibacillus* species, including *Bacillus cereus*, *B. thuringiensis*, *B. licheniformis*, *B. pumilus*, *B. megaterium*, *B. coagulans*, *P. alvei*, and *P. larvae* [2,3,11,17,35,45], are commonly detected in honey. While *P. larvae* and *P. alvei* are associated with different honeybee diseases, *B. subtilis*, *B. pumilus*, *B. cereus*, *B. licheniformis*, *B. circulans*, and *B. megaterium* are predominant in the digestive tracts of larvae and honey bees [3,41]. *Bacillus cereus* and *B. megaterium* are also common in soils, dust, and flower surfaces. In Argentinian honeys, the most prevalent spore-forming species are *P. larvae*, *P. alvei*, *B. cereus*, *B. pumilus*, and *B. megaterium* [2,3,21,22].

*Bacillus megaterium* is an aerobic, gram-positive, spore-forming bacterium that in addition to honey has been isolated from various food sources, i.e., shellfish, raw meat,

\*Corresponding author: A.M. Alippi  
Unidad de Bacteriología. Centro de Investigaciones de Fitopatología (CIDEFI)-CIC. Facultad de Ciencias Agrarias y Forestales  
Universidad Nacional de La Plata  
Calle 60 y 119 S/N c.c. 31  
1900 La Plata, Argentina  
Tel. + 54-2214236758. Fax +54-2214252346  
E-mail: alippi@biol.unlp.edu.ar; adrianaalippi@gmail.com

rice, corn, and soymilk [1–3,18,31]. The antibiotic-like compounds produced by *B. megaterium* include megacins and other inhibitory substances [4,28,32]. To date, *B. megaterium* has not been associated with any human disease, but its pathogenic potential is evidenced by the presence in its genome of several toxin-encoding genes, i.e., *bceT* (enterotoxin-T), *hblC*, *hblA*, *hblD* (HBL complex), and *nheA*, *nheB*, *nheC* (NHE complex) [23,34,38]. In addition, the production of a novel heat-stable toxin by *B. megaterium* strain F98/3079 has been reported [43]. Of particular relevance to this study is the detection of both hemolytic and coagulase activities in 39 *B. megaterium* isolates obtained from honey samples of different origins [22].

The pathogenic potential of bacteria and the biological activity of bacterial toxins have been studied *in vitro* in a variety of cell culture systems [14]. As a cell line with differentiation markers characteristic of mature intestinal epithelial cells, enterocyte-like Caco-2 cells (ATCC HTB-37) are a well-recognized *in vitro* model system. These markers include functional tight junctions, microvilli, and a number of brush border-associated enzymes and transporters, i.e., peptidases, esterases, P-glycoproteins, and uptake transporters for amino acids, bile acids, and carboxylic acids [36,39]. Consequently, Caco-2 cells have been used to mimic bacteria-host interactions in the intestinal tract [6,7,12,16,25,26,33]. They were chosen in our study of the virulence potential of *B. megaterium* strains isolated from honey because the intestinal epithelium is rapidly exposed to potential foodborne pathogens. Although interactions between *Bacillus* spp. and cultured cells, e.g., Caco-2, human epithelial type 2 cells (Hep-2), and cell lines derived from cervical cancer (HeLa), have been investigated [26,37,38], to our knowledge, ours is the first study to focus on *B. megaterium*.

## Materials and methods

**Bacterial strains, media and culture conditions.** Fifty-three strains of *B. megaterium* were evaluated. Except for *B. megaterium* NRRL B-939, all strains were isolated from honey (49 from Argentina [Bm1–Bm21 and Bm25–Bm52], 2 from Brazil [Bm23 and Bm24], and 1 from France [Bm22], as previously described [22]). The bacteria were stored at –80 °C in tryptone soy broth with 20 % (v/v) glycerol as cryoprotectant. Prior to the experiments, each strain was cultured in nutrient broth (NB) under constant agitation at 32 °C for 16 h. Afterwards, they were inoculated (2 % v/v) in 5 ml of NB and incubated under constant agitation at 32 °C for 3 h or 16 h, according to the assay conditions. Bacteria were harvested by centrifugation (900 ×g for 10 min).

**Culture of Caco-2 cells.** The human colon cancer cell line Caco-2 was routinely grown in Dulbecco's modified Eagle's medium (DMEM) (25 mM glucose) (Life Technologies, Carlsbad, CA, USA), supplemented with 15 % (v/v) heat-inactivated (56 °C, 30 min) fetal calf serum (FCS, PAA Laboratories, Pasching, Austria), 12 IU penicillin/ml–12 µg streptomycin/ml (Life Technologies), and 1 % (v/v) non-essential amino acids (Life Technologies). Monolayers were prepared in 24-well tissue culture plates (Greiner Bio One, Frickenhausen, Germany) by seeding  $7 \times 10^4$  cells per well. Experiments and cell maintenance were carried out in an atmosphere of 5 % CO<sub>2</sub> at 37 °C. Assays were performed with differentiated cells (late post-confluence, 15 days of culture).

**Detachment of Caco-2 cells.** Detachment of enterocyte-like cells was studied as reported previously [25]. Briefly, filter-sterilized (0.45-µm pore size) spent culture supernatants (SCSs) were obtained from 16-h bacterial cultures in NB. Differentiated Caco-2 monolayers were incubated with 0.5 ml of serially diluted SCSs in NB (ratios of SCSs/total volume ranged from 0/0.5 to 0.5/0.5 per well) at 37 °C for 1 h. The cells were washed twice with phosphate buffered saline (PBS) (pH 7.2), fixed at room temperature with 2 % (v/v) formaldehyde in PBS for 1 min, and washed again with PBS. Afterwards, the cells were stained by incubating them with 500 µl of a crystal violet solution (0.13 % [w/v] crystal violet, 5 % [v/v] ethanol, and 2 % [v/v] formaldehyde in PBS) at room temperature for 20 min. After a PBS wash to remove excess stain, the samples were treated with freshly prepared 50 % (v/v) ethanol at room temperature for 1 h. Absorbance was measured in a microplate reader at 620 nm (BioTek, Winooski, Vermont, USA). All experiments were performed in triplicate. The percentage of cell detachment was calculated as follows: cell detachment % =  $100 \times (A_c - A_s)/A_c$ , where  $A_c$  is the  $A_{620}$  of control cells and  $A_s$  the  $A_{620}$  of sample cells.

**Necrosis.** Necrosis was assessed according to a modification of a previously published method [47], using, short incubation periods to prevent cell detachment (37 °C, 20 min). After their incubation with SCSs from 16-h bacterial cultures in NB, the cells were washed twice with binding buffer containing 25 mM 4-(2-hydroxyethyl)-1-piperazineethanesulfonic acid (HEPES), 125 mM NaCl, 2.5 mM CaCl<sub>2</sub>, (pH 7.2), and 0.2 % (p/v) gelatin. One µg of propidium iodide in 100 µl of binding buffer was then added to each well, and the plates were placed on ice for 15 min. The samples were subsequently mounted in 50 % (v/v) glycerol in PBS and analyzed by conventional fluorescence microscopy using a Leica DMLB microscope coupled to a Leica DC 100 camera (Leica Microscopy Systems, Heerbrugg, Switzerland).

**Cell association assays.** Bacterial cultures (37 °C, 3 h) were centrifuged and the pellets were suspended in 1 ml of DMEM containing 100 µg chloramphenicol/ml. As reported by Minnaard et al. [26], under these conditions the bacteria remain viable but do not grow. The bacterial concentration was adjusted to 10<sup>8</sup> colony-forming units (CFU)/ml. The cell monolayers were washed twice with PBS, treated with the bacterial suspensions (multiplicity of infection = 100 bacteria per cell), and incubated in an atmosphere of 5 % CO<sub>2</sub> at 37 °C for 2 h. To evaluate cell association (adhering plus invading bacteria), the monolayers were exhaustively washed with PBS and then incubated with 1 ml of distilled water per well, which lysed only the eukaryotic cells. The bacteria present in the lysate were counted by plating appropriate dilutions on nutrient agar and incubating the samples at 32 °C for 16 h.

**Cell invasion assays.** Enterocyte invasion was assessed by the aminoglycoside protection assay as previously reported [13], using gentamicin to kill non-internalized bacteria. Briefly, after infection, monolayers washed three times with PBS were treated with 1 ml of gentamicin

(100 µg/ml in PBS) per well, and incubated at 37 °C for 1 h. The monolayers were then washed twice with PBS, lysed in 1 ml of distilled water, and maintained at 37 °C for 1 h. Serial dilutions of the suspensions were plated on nutrient agar as described above. To assess the presence of spores, aliquots of each sample were heat treated in a block heater (Nova Etica, Vargem Grande Paulista, SP, Brazil) at 60 °C for 30 min, and appropriate dilutions were plated onto nutrient agar. Strains were considered to be invasive only when the number of survivors after gentamicin treatment was significantly higher than the number after thermal treatment [26]. All infection assays were performed in FCS-free medium.

**PCR analysis.** Strains that detached enterocyte-like cells were screened by polymerase chain reaction (PCR) for the presence of enterotoxin genes (*entFM*, *entS*, and *pipIC*) and *sph* (sphingomyelinase) gene according to the procedures described by Ghelardi and co-workers [10]. DNA was amplified in a thermal cycler (Eppendorf Mastercycler, Eppendorf AG, Hamburg, Germany) using the same PCR primers and conditions as previously reported [10]. PCR products were resolved in 1.6 % agarose gels in 0.5× TBE buffer, stained with GelRed (genBiotech SRL, Buenos Aires, Argentina), and visualized with a UV transilluminator (UVP, Upland, California, USA). Gel images were digitalized and photographed using a digital image capture gel documentation system (Digi Doc-it, UVP, v. 1.1.25, Upland, California, USA).

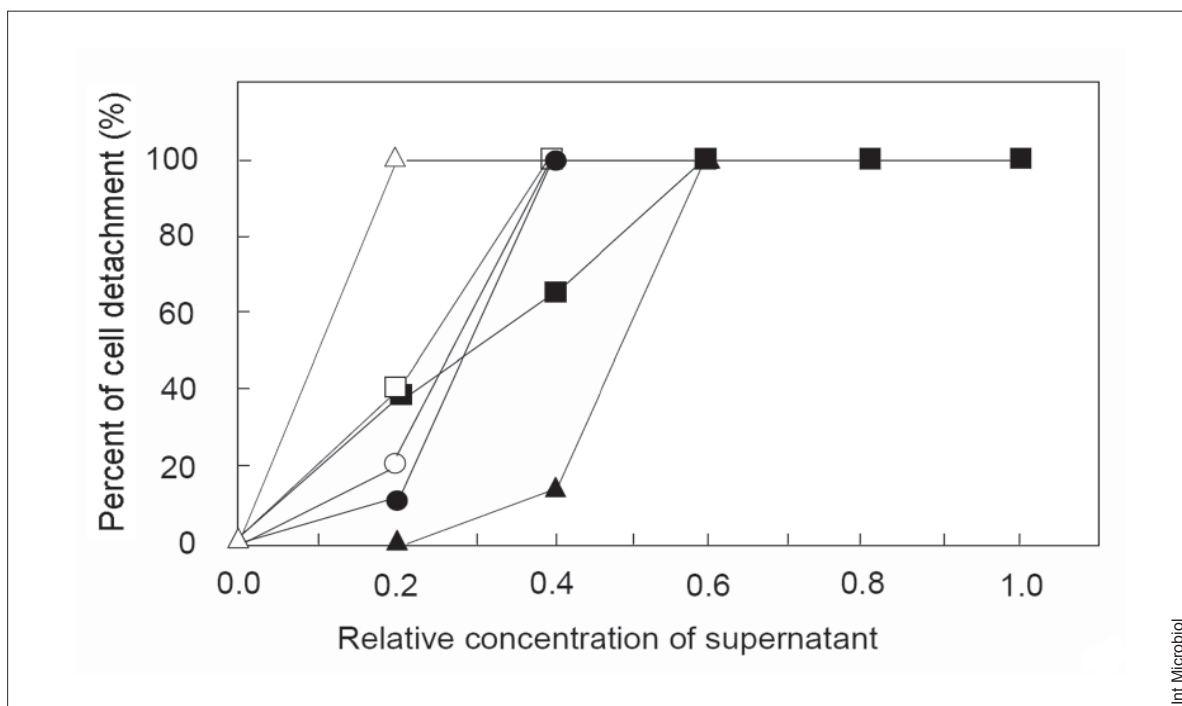
**Statistical analysis.** Microsoft Office Excel (version 2003) was used for the statistical analysis. The results of the experiments were compared by means of two-tailed Student's t-test, with  $P < 0.05$  considered statistically significant.

## Results

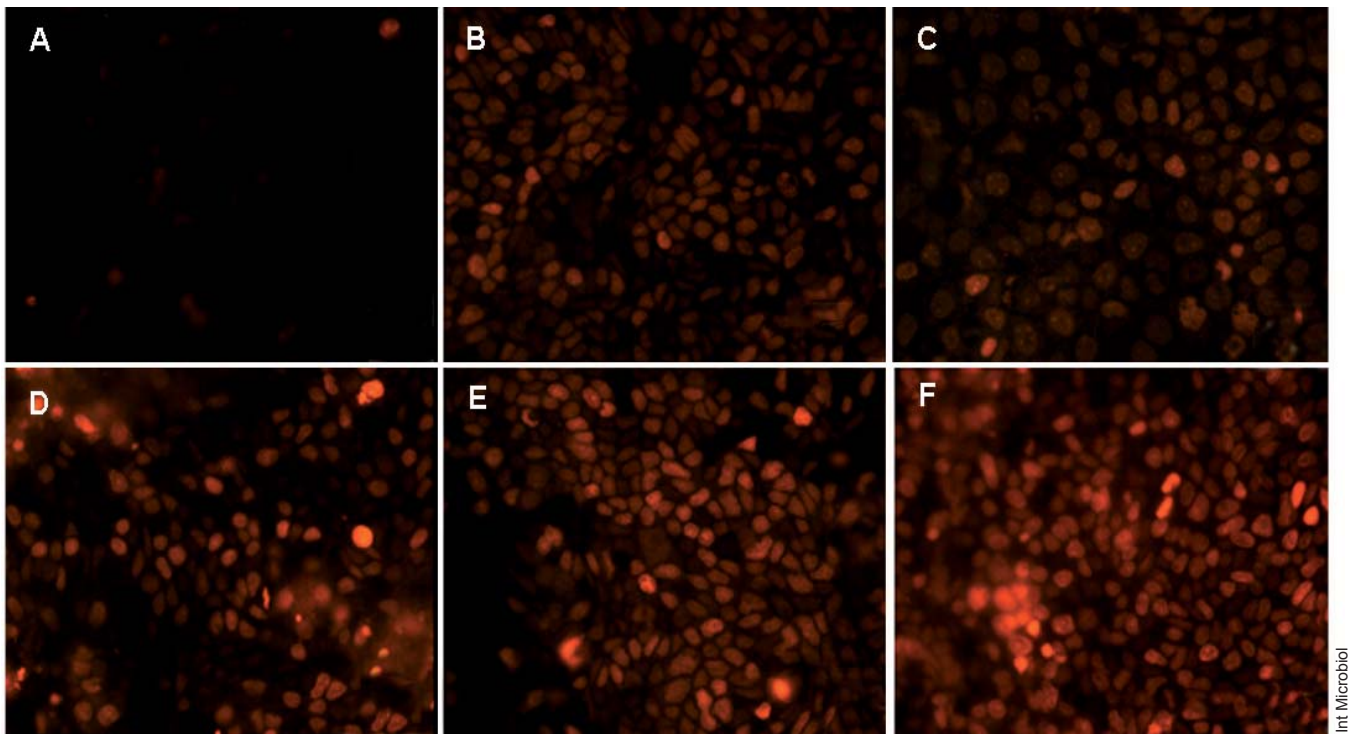
**Detachment of Caco-2 cells.** Exploratory experiments analyzing the effect of different *B. megaterium* SCSs on fully differentiated Caco-2 cells showed that the filtered culture supernatants of seven out of the 53 bacterial strains tested caused complete cell detachment, with no evidence of biological activity in the remaining 46 strains (data not shown). The SCSs of these strains, i.e., Bm1, Bm8, Bm9, Bm10, Bm29, Bm30 and Bm51, all isolated from Argentinian honeys, were used for further studies.

Differences in the biological activity of the seven SCSs at low doses were observed. At a SCS/total volume ratio of 0.2/0.5, the biological activities of strains Bm8, Bm29, Bm30 and Bm51 were higher than those of strains Bm1, Bm9 and Bm10 ( $P < 0.05$ ). For all of the strains under study, undiluted supernatants (ratios 0.5/0.5) caused the total detachment of Caco-2 cell monolayers (Fig. 1).

**Necrosis.** Cell necrosis was evaluated with SCSs prepared from 16-h cultures of strains Bm1, Bm8, Bm10, Bm29,



**Fig. 1.** Detachment of Caco-2 cells after their co-incubation (1 h at 37 °C) with different concentrations of filtered culture supernatants of *Bacillus megaterium* strains: Bm1 (closed triangles), Bm8 (open squares), Bm9 (open circles), Bm10 (closed circles), Bm30 (closed squares), Bm29 and Bm51 (open triangles; the same symbol is used for Bm29 and Bm51 strains because they induced the same responses). All symbols overlap at 0 and 100 % cell detachment. A relative concentration of supernatant equal to 1 indicates undiluted supernatants. Spent cultures were diluted in NB.



**Fig. 2.** Fluorescence microscopy of Caco-2 cells co-incubated at 37 °C for 20 min with filtered culture supernatants of strains Bm1 (B), Bm8 (C), Bm10 (D), Bm29 (E), and Bm30 (F). The control was co-incubated with NB medium only (A). Cells were labeled with propidium iodide (PI). Red cells indicate the nuclei of necrotic cells (40×). All micrographs are representative of three independent experiments conducted with successive cell passages.

and Bm30 (Fig. 2). When briefly (20 min) incubated with the cell monolayers, none of these strains induced detachment. Instead, high ratios of necrotic cells were obtained (Fig. 2B–D). By contrast, only a few necrotic cells were seen in untreated control monolayers (Fig. 2A).

**Cell association and invasion.** Infection assays were conducted only with strains whose supernatants detached Caco-2 cells. Strains Bm1, Bm9 and Bm10 associated with the monolayers at levels significantly higher than strains Bm29, Bm51 and Bm8 ( $P < 0.05$ ) (Fig. 3A). Strain Bm30 was not included in these assays because it was gentamicin resistant and thus inappropriate for the assessment of invasion in the aminoglycoside protection assay.

As seen in Fig. 3B, strains Bm1 and Bm10 were the most invasive ( $P < 0.05$ ). The number of bacteria penetrating the cells was  $1 \times 10^4$  CFU/ml for strain Bm1 and  $6 \times 10^3$  CFU/ml for strain Bm10. For strains Bm8, Bm9 and Bm29, about  $4 \times 10^3$  CFU/ml invaded the Caco-2 cells while strain Bm51 was not internalized at all (Fig. 3B). Note that the experiments were performed with 3-h cultures to minimize the presence of sporulated microorganisms. For all six strains evaluated, the number of survivors was significantly ( $P < 0.05$ )

higher after gentamicin treatment than after thermal treatment (60 °C, 30 min).

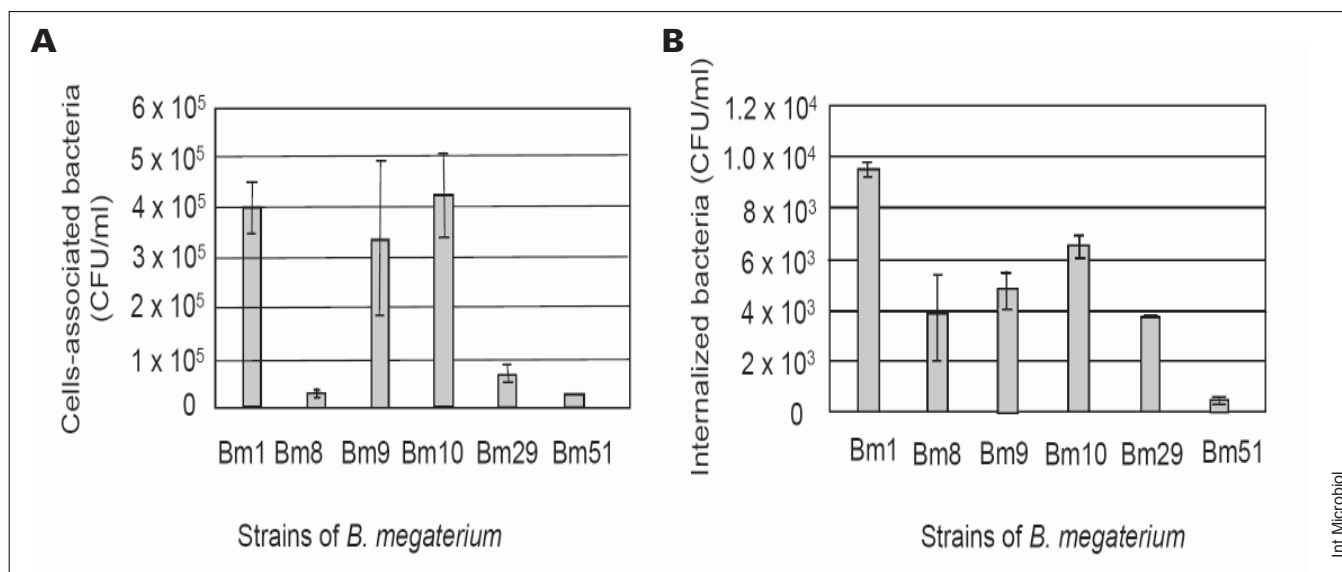
**PCR analysis.** Strains Bm8, Bm9, Bm10, and Bm51 were positive for all four enterotoxigenic genes tested, i.e., *sph*, *entFM*, *entS*, and *pipIC*, as determined by PCR. Strain Bm29 was positive for *entS*, *sph* and *pipIC*, and strain Bm1 for *entS* and *pipIC* (data not shown).

## Discussion

Bacteria belonging to the *B. cereus* group have been associated with outbreaks of foodborne illness and other diseases [42]. Their pathogenicity can be related to the production of several toxins [5,8–10,15,20,40,42]. In this work, we focused on *B. megaterium*, since genes encoding biologically active molecules have also been found in strains of the bacterium isolated in Argentinian honeys [23].

In our study, high doses of SCSs from seven strains of *B. megaterium* completely detached monolayers of cultured enterocytes and led to cell necrosis. Furthermore, six of





**Fig. 3.** Cell-association (A) and cell-invasion (B) assays of six different *Bacillus megaterium* strains with fully differentiated Caco-2 cells. Values  $\pm$  standard deviations are from a representative experiment with three replicates.

those detachment-inducing strains were also capable of cell invasion (one strain could not be tested, see above). These findings demonstrated that the induction of cell detachment by extracellular factors secreted by *B. megaterium* is not a general property of this species, which is in agreement with findings published for *B. cereus* [25,27]. From the dose-response curves obtained in cell detachment assays with *B. cereus* SCSs, Minnaard and co-workers defined three types of strains: (i) high detaching (HD) strains detach cells even at low doses; (ii) low detaching (LD) strains detach cells at high doses; and (iii) non-detaching (ND) strains [27]. Accordingly, in the present study of *B. megaterium*, two HD (strains Bm 29 and Bm 51) and five LD (strains Bm 1, Bm 8, Bm 9, Bm 10 and Bm 30) strains were identified, whereas the remaining 46 strains were ND. The biological activity of the SCSs from the seven HD and LD strains may depend on secreted extracellular factors. The SCSs of strains Bm9 and Bm51 resulted in cell detachment within a few minutes, indicative of their stronger biological activity than the SCSs of the other five isolates, and could therefore not be assayed for their ability to cause cell necrosis.

All *B. megaterium* strains that led to enterocyte detachment had been previously reported to have hemolytic and coagulase activities [22,23]. Note that *B. cereus*, *B. thuringiensis* and *B. megaterium* share several sequences encoding virulence factors [10,23]. Besides the enterotoxigenic genes *sph*, *entFM*, *entS*, and *piplC* detected in this work,

sequences of the HBL complex, the *nheC* gene from the NHE complex, and *bceT* and *cytK* genes had been previously detected in the LD strains Bm8 and Bm9 [23]. HD strains Bm29 and Bm51 were positive for the enterotoxigenic genes *sph*, *entS*, and *piplC* and *sph*, *entFM*, *entS*, and *piplC*, respectively, while LD Bm10 was positive for all four enterotoxigenic genes, and LD Bm1 was positive for only two of the genes tested. By contrast, Bm30 was negative for all the virulence genes tested here and in a previous study [23].

Adhesion is a key event in the pathogenicity of many bacteria. Adhered bacteria either remain on the cell surface (e.g., diffusely adherent *E. coli* [DAEC]; enteropathogenic *E. coli* [EPEC]) or subsequently invade the cell (e.g., enteroinvasive *E. coli* [EIEC]; *Shigella* spp.; *Yersinia* spp.; *Listeria* spp.) [6,24,29,44,46].

The values obtained for *B. megaterium* in the association and invasion assays were in the range of those previously reported for *B. cereus* [26]. Note that, while the LD strains Bm8 and Bm29 had the lowest association values, their internalization efficiencies (ratio of invading to associated bacteria) were relatively high (0.16 and 0.06, respectively).

Bacteria that adhere to eukaryotic cells can trigger a biological response by interacting with host cell surface receptors linked to signaling pathways [13]. In vitro, this ability depends on both the differentiation status of the host cells, which determines receptor expression, and the

growth phase at which the bacteria were harvested [19]. We found that cultured human enterocytes infected with *B. megaterium* suspensions prepared from 3-h cultures led to cell detachment (data not shown). These findings are in agreement with those reported for *B. cereus* infection of cultured human enterocytes [26]. In addition, we were able to show that cell detachment following infection with bacterial vegetative cells was inhibited when the assays were performed in the presence of chloramphenicol, suggesting that protein synthesis was necessary for a maximal biological effect.

The ability of *B. megaterium* to attach to and subsequently invade enterocytes may reflect its pathogenic potential. This conclusion supports a previous study showing that *B. megaterium* strains isolated from infant formula are not only able to adhere to and invade epithelial cells but are also positive for the presence of enterotoxins [38].

To our knowledge, this is the first report that demonstrates strain-dependent biological effects following the infection of cultured human enterocytes by *B. megaterium* isolates, and the biological activity of spent culture supernatants. Our results are consistent with the multifactorial character of *B. megaterium* virulence. Although further studies are necessary to completely unravel the pathogenic potential of this species, our work provides the first step in the study of the interaction between *B. megaterium* and its host in the context of intestinal infections.

**Acknowledgements.** This research was partially supported by the Agencia Nacional de Promoción Científica y Tecnológica (ANPCyT), CONICET and UNLP Argentina. ACL; JM and PFP are members of the Scientific Research Career of Consejo Nacional de Investigaciones Científicas y Técnicas CONICET (CCT La Plata, Argentina) and AMA is a member of the Scientific Research Career of Comisión de Investigaciones Científicas de la Provincia de Buenos Aires (CIC), Argentina.

**Competing interest.** None declared.

## References

- Al Bulushi IM, Poole SE, Barlow R, Deeth HC, Dykes GA (2010) Speciation of Gram-positive bacteria in fresh and ambient-stored sub-tropical marine fish. *Int J Food Microbiol* 138:32-38
- Alippi AM (1995) Detection of *Bacillus larvae* spores in Argentinian honeys by using a semi-selective medium. *Microbiologia SEM* 11:343-350
- Alippi AM, Reynaldi FJ, Lopez AC, De Giusti MR, Aguilar OM (2004) Molecular epidemiology of *Paenibacillus larvae* and incidence of American foulbrood in Argentinian honeys from Buenos Aires Province. *J Apic Res* 43:135-143
- Alippi AM, Reynaldi FJ (2006) Inhibition of the growth of *Paenibacillus larvae* the causal agent of American foulbrood of honey bees by selected strains of aerobic spore forming bacteria isolated from apiarian sources. *J Invertebr Pathol* 91:141-146
- Beecher DJ, Lee Wong AC (1994) Identification of hemolysin BL-producing *Bacillus cereus* by a discontinuous hemolytic pattern in blood agar. *Appl Environ Microbiol* 60:1646-1651
- Cossart P, Roy C (2010) Manipulation of host membrane machinery by bacterial pathogens. *Curr Opin Cell Biol* 22:547-554
- Dean P, Young L, Quitard S, Kenny B (2013) Insights into the pathogenesis of enteropathogenic *E. coli* using an improved intestinal enterocyte model. *PLoS One* 8:e55284 doi: 10.1371/journal.pone.0055284
- Esbelin J, Jouanneau Y, Dupont C (2012) *Bacillus cereus* Fnr binds a [4Fe-4S] cluster and forms a ternary complex with ResD and PlcR. *BMC Microbiol* 12:125 doi:10.1186/1471-2180-12-125
- Fagerlund A, Lindbäck T, Granum PE (2010) *Bacillus cereus* cytotoxins Hbl, Nhe and CytK are secreted via the Sec translocation pathway. *BMC Microbiol* 10:304 doi: 10.1186/1471-2180-10-304
- Ghelardi E, Celandroni F, Salvetti S, Barsotti C, Baggiani A, Senesi S (2002) Identification and characterization of toxigenic *Bacillus cereus* isolates responsible for two food-poisoning outbreaks. *FEMS Microbiol Lett* 208:129-134
- Gilliam M (1979) Microbiology of pollen and bee bread: the genus *Bacillus*. *Apidologie* 10:269-274
- Golowczyc MA, Silva J, Teixeira P, De Antoni GL, Abraham AG (2011) Cellular injuries of spray-dried *Lactobacillus* spp. isolated from kefir and their impact on probiotic properties. *Int J Food Microbiol* 144:556-560
- Guignot J, Bernet-Camard MF, Poüs C, Plançon L, Le Bouguenec C, Servin AL (2001) Polarized entry into human epithelial cells of uropathogenic Afa/Dr diffusely adhering *Escherichia coli* strain IH1128: Evidence for 5B1 integrin recognition, and subsequent internalization through a pathway involving caveolae and dynamic unstable microtubules. *Infect Immun* 69:1856-1868
- Jay JM, Loessner MJ, Golden DA (2005) Bioassay and related methods in modern food microbiology. In: Heldman DR (ed) *Modern food microbiology*, 7th ed. Heldman Associates, California, USA, 790 pp
- Jackson SG, Goodbrand RB, Ahmed R, Kasatija S (1995) *Bacillus cereus* and *Bacillus thuringiensis* isolated in gastroenteritis outbreak investigations. *Lett Appl Microbiol* 21:103-105
- Kaakoush NO, Deshpande NP, Wilkins MR, Tan CG, Burgos-Portugal JA, Raftery MJ, Day AS, Lemberg DA, Mitchell H (2011) The pathogenic potential of *Campylobacter concisus* strains associated with chronic intestinal diseases. *PLoS One*. 6:e29045 doi:10.1371/journal.pone.0029045
- Kokubo Y, Jinbo K, Kaneko S, Matsumoto M (1984) Prevalence of spore-forming bacteria in commercial honey. *Annu Rep Tokyo Metrop Res Lab Public Health* 35:192-196
- Kong Q, Shan S, Liu Q, Wang X, Yu F (2010) Biocontrol of *Aspergillus flavus* on peanut kernels by use of a strain of marine *Bacillus megaterium*. *Int J Food Microbiol* 139:31-35
- Kusters JG, Mulders-Kremers GA, van Doornik CE, van der Zeijst BA (1993) Effects of multiplicity of infection, bacterial protein synthesis and growth phase on adhesion to and invasion of human cell lines by *Salmonella typhimurium*. *Infect Immun* 61:5013-5020
- Lindbäck T, Fagerlund A, Rødland MS, Granum PE (2004) Characterization of the *Bacillus cereus* Nhe enterotoxin. *Microbiology* 150:3959-3967
- López AC, Alippi AM (2007) Phenotypic and genotypic diversity of *Bacillus cereus* isolates recovered from honey. *Int J Food Microbiol* 117:175-184

22. López AC, Alippi AM (2009) Diversity of *Bacillus megaterium* isolates cultured from honeys. *LWT-Food Sci Technol* 42:212-219
23. López AC, Alippi AM (2010) Enterotoxigenic gene profiles of *Bacillus cereus* and *Bacillus megaterium* isolates recovered from honey. *Rev Argent Microbiol* 42:216-225
24. Mikula KM, Kolodziejczyk R, Goldman A (2012) *Yersinia* infection tools—characterization of structure and function of adhesins. *Front Cell Infect Microbiol* 2:169 doi: 10.3389/fcimb.2012.00169
25. Minnaard J, Humen M, Pérez PF (2001) Effect of *Bacillus cereus* exocellular factors on human intestinal epithelial cells. *J Food Prot* 64:1535-1541
26. Minnaard J, Lievin-Le Moal V, Coconnier MH, Servin AL, Pérez PF (2004) Disassembly of F-actin cytoskeleton after interaction of *Bacillus cereus* with fully differentiated human intestinal Caco-2 cells. *Infect Immun* 72:3106-3112
27. Minnaard J, Delfederico L, Vasseur V, Hollmann A, Rolny I, Semorile L, Perez PF (2007) Virulence of *Bacillus cereus*: a multivariate analysis. *Int J Food Microbiol* 116:197-206
28. Mora I, Cabrefiga J, Montesinos E (2011) Antimicrobial peptide genes in *Bacillus* strains from plant environments. *Int Microbiol* 14:213-223
29. Navarro Garcia F, Elias WP (2011) Autotransporters and virulence of enteroaggregative *E. coli*. *Gut Microbes* 2:13-24
30. Ou G, Baranov V, Lundmark E, Hammarström S, Hammarström ML (2009) Contribution of intestinal epithelial cells to innate immunity of the human gut—studies on polarized monolayers of colon carcinoma cells. *Scand J Immunol* 69:150-161
31. Patil AG, PK K, Mulimani VH, Veeranagouda Y, Lee K (2010)  $\alpha$ -Galactosidase from *Bacillus megaterium* VHM1 and its application in removal of flatulence-causing factors from soymilk. *J Microbiol Biotechnol* 11:1546-1554
32. Pelletier A, Sygusch J (1990) Purification and characterization of three chitinase activities from *Bacillus megaterium* P1. *Appl Environ Microbiol* 56:844-848
33. Pérez PF, Minnaard J, Disalvo EA, De Antoni GL (1998) Surface properties of bifidobacterial strains of human origin. *Appl Environ Microbiol* 64:21-26
34. Phelps RJ, McKillip JL (2002) Enterotoxin production in natural isolates of *Bacillaceae* outside the *Bacillus cereus* group. *Appl Environ Microbiol* 68:3147-3151
35. Piana ML, Poda G, Cesaroni D, Cuetti L, Bucci MA, Gotti P (1991) Research on microbial characteristics of honey samples of Udine province. (In Italian). *Riv Soc Ital Sci Aliment* 20:293-301
36. Pinto M, Robine-Leon S, Appay M, Keding M, Triadou N, Dussaulx E, Lacroix B, Simon-Assmann P, Haffen K, Fogh J, Zweibaum A (1983) Enterocyte-like differentiation and polarization of the human colon carcinoma cell line Caco-2 in culture. *Biol Cell* 47:323-330
37. Ramarao N, Lereclus D (2006) Adhesion and cytotoxicity of *Bacillus cereus* and *Bacillus thuringiensis* to epithelial cells are FlhA and PlcR dependent, respectively. *Microbes Infect* 8:1483-1491
38. Rowan NJ, Deans K, Anderson JG, Gemmell CG, Hunter SI, Chaithong T (2001) Putative virulence factor expression by clinical and food isolates of *Bacillus* spp. after growth in reconstituted infant milk formulae. *Appl Environ Microbiol* 67:3873-3881
39. Sambuy Y, De Angelis I, Ranaldi G, Scarino ML, Stamatii A, Zucco F (2005) The Caco-2 cell line as a model of the intestinal barrier: influence of cell and culture-related factors on Caco-2 cell functional characteristics. *Cell Biol Toxicol* 21:1-26
40. Schoeni JL, Lee WAC (2005) *Bacillus cereus* food poisoning and its toxins. *J. Food Prot.* 68:636-648
41. Snowdon JA, Cliver DO (1996) Microorganisms in honey. *Int J Food Microbiol* 31:1-2
42. Stenfors Arnesen LP, Fagerlund A, Granum PE (2008) From soil to gut: *Bacillus cereus* and its food poisoning toxins. *FEMS Microbiol Rev* 32:579-606
43. Taylor JM, Sutherland AD, Aidoo KE, Logan NA (2005) Heat stable toxin production by strains of *Bacillus cereus*, *Bacillus firmus*, *Bacillus megaterium*, *Bacillus simplex* and *Bacillus licheniformis*. *FEMS Microbiol Lett* 242:313-317
44. Tran Van Nhieu G, Kai Liu B, Zhang J, Pierre F, Prigent S, Sansonetti P, Ermeux C, Kuk Kim J, Suh PG, Dupont G, Combettes L (2013) Actin-based confinement of calcium responses during *Shigella* invasion. *Nat Commun* 4:1567 doi: 10.1038/ncomms2561
45. Tysset C, Durand C, Taliergio YP (1970) Contributions to the study of the microbial contamination and the hygiene of commercial honey. *Recl Med Vet* 146:1471-1492
46. van den Beld MJ, Reubsaet FA (2012) Differentiation between *Shigella*, enteroinvasive *Escherichia coli* (EIEC) and noninvasive *Escherichia coli*. *Eur J Clin Microbiol Infect Dis* 31:899-904
47. van Engeland M, Schutte B, Hopman AHN, Ramaekers FCS, Reutelingsperger CPM (1999) Cytochemical detection of cytoskeletal and nucleoskeletal changes during apoptosis. In: Studzinski GP (ed) *Apoptosis. A practical approach*. Oxford University Press, Oxford, UK